

SSSCA1 antibody

Catalog Number: 115611

Product name

SSSCA1 antibody

IP: 1:500-1:5000

IF: 1:10-1:100

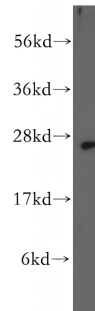
Specificity

Human, Mouse, Rat; other species not tested.

Validations

Antibody description

SSSCA1 Rabbit Polyclonal antibody. Positive FC detected in HeLa cells. Positive IF detected in HeLa cells. Positive IP detected in HeLa cells. Positive WB detected in HeLa cells, A549 cells. Observed molecular weight by Western-blot: 27 kDa



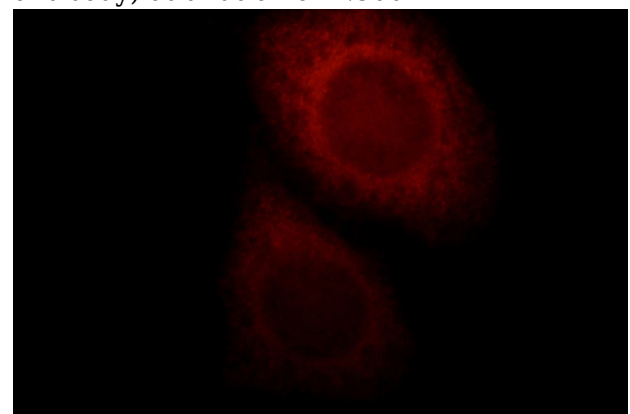
Preparation

This antibody was obtained by immunization of SSSCA1 recombinant protein (Accession Number: NM_006396). Purification method: Antigen affinity purified.

HeLa cells were subjected to SDS PAGE followed by western blot with Catalog No:115611(SSSCA1 antibody) at dilution of 1:500

Formulation

PBS with 0.1% sodium azide and 50% glycerol pH 7.3.



Storage

Store at -20°C. DO NOT ALIQUOT

Clonality

Polyclonal

Immunofluorescent analysis of HeLa cells, using SSSCA1 antibody Catalog No:115611 at 1:25 dilution and Rhodamine-labeled goat anti-rabbit

Ig Type

Rabbit IgG

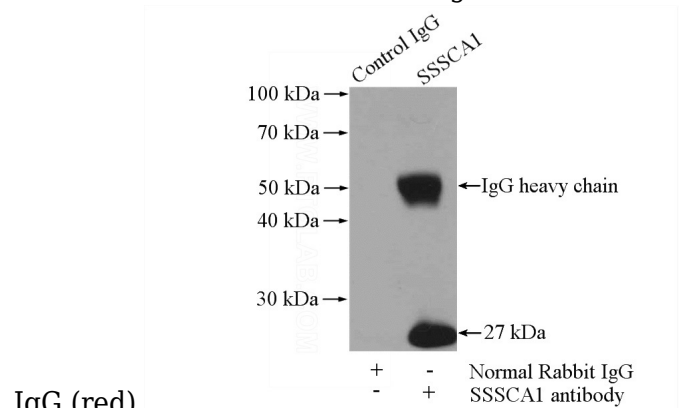
Applications

ELISA, WB, IF, IP, FC

Dilutions

Recommended Dilution:

WB: 1:200-1:2000



IgG (red).

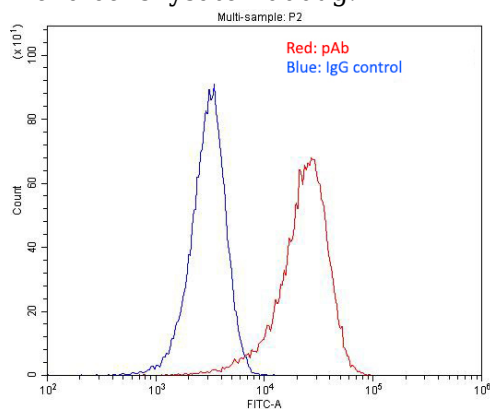
IP Result of anti-SSSCA1 (IP:Catalog No:115611,

SSSCA1 antibody



Catalog Number: 115611

4ug; Detection:Catalog No:115611 1:1000) with HeLa cells lysate 2000ug.



1X10⁶ HeLa cells were stained with 0.2ug SSSCA1 antibody (Catalog No:115611, red) and control antibody (blue). Fixed with 4% PFA blocked with 3% BSA (30 min). Alexa Fluor 488-conjugated AffiniPure Goat Anti-Rabbit IgG(H+L) with dilution 1:1500.