

# CRYAA Polyclonal Antibody



Catalog Number: 164611

## Product name

CRYAA Polyclonal Antibody

## Specificity

Human, Mouse, Rat, Zebrafish

## Antibody description

Polyclonal antibody to CRYAA

## Preparation

Antigen: Recombinant fusion protein containing a sequence corresponding to amino acids 1-173 of human CRYAA (NP\_000385.1).

## Formulation

PBS with 0.02% sodium azide, 50% glycerol, pH7.3.

## Storage

Store at -20°C. Avoid freeze / thaw cycles.

## Clonality

Polyclonal

## Ig Type

Rabbit IgG

## Applications

WB, IHC, IF

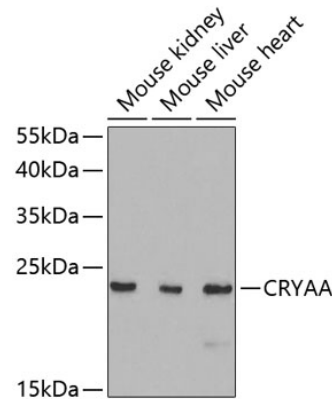
## Dilutions

WB 1:500 - 1:2000

IHC 1:50 - 1:200

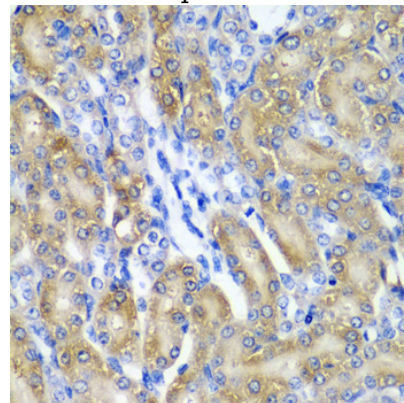
IF 1:50 - 1:100

## Validations



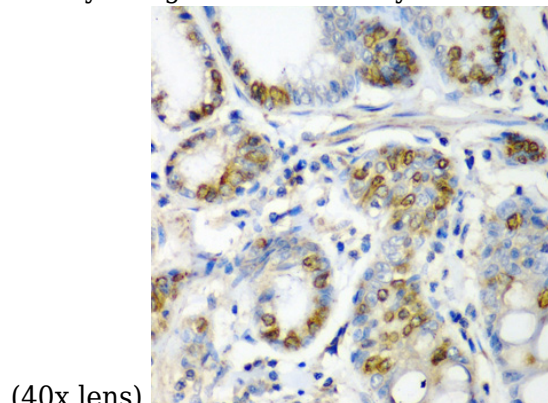
Western blot - CRYAA Polyclonal Antibody

Western blot analysis of extracts of various cell lines, using CRYAA antibody at 1:1000 dilution. Secondary antibody: HRP Goat Anti-Rabbit IgG (H+L) at 1:10000 dilution. Lysates/proteins: 25ug per lane. Blocking buffer: 3% nonfat dry milk in TBST. Detection: ECL Basic Kit. Exposure time: 60s.



Immunohistochemistry - CRYAA Polyclonal Antibody

Immunohistochemistry of paraffin-embedded rat kidney using CRYAA antibody at dilution of 1:200



(40x lens).

# CRYAA Polyclonal Antibody

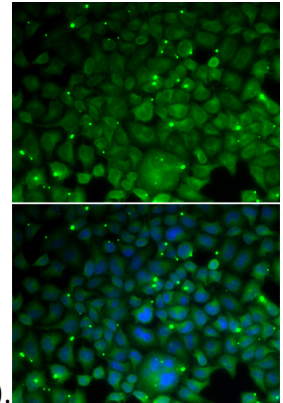


Catalog Number: 164611

---

Immunohistochemistry - CRYAA Polyclonal Antibody

Immunohistochemistry of paraffin-embedded human colon carcinoma using CRYAA antibody at



dilution of 1:200 (40x lens).

Immunofluorescence - CRYAA Polyclonal Antibody

Immunofluorescence analysis of HeLa cells using CRYAA antibody . Blue: DAPI for nuclear staining.