

## General Information

### Gene Name Synonym

2-phospho-D-glycerate hydro-lyase; Enolase 2;  
Neural enolase; Neuron-specific enolase

### Protein Construction

A DNA sequence encoding the mature form of human ENO2 (P09104) (Met 1-Leu 434) was fused with a polyhistidine tag at the C-terminus.

### Organism

Human

### Expression Host

E. coli

## QC Testing

### Purity

> 97 % as determined by SDS-PAGE

### Endotoxin

Please contact us for more information.

### Stability

Samples are stable for up to twelve months from date of receipt at -70°C

### Predicted N terminal

Met 1

### Molecular Mass

The recombinant human ENO2 comprises 444

amino acids and has a calculated molecular mass of 48.6KDa. It migrates as an approximately 48 kDa band as predicted in SDS-PAGE under reducing conditions.

### Formulation

Lyophilized from sterile PBS, pH 7.4

1. 5 % trehalose and mannitol are added as protectants before lyophilization.

2. Please contact us for any concerns or special requirements.

## Usage Guide

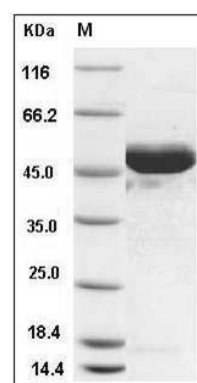
### Storage

Store it under sterile conditions at -20°C to -80°C. It is recommended that the protein be aliquoted for optimal storage. Avoid repeated freeze-thaw cycles.

### Reconstitution

Adding sterile water, prepare a stock solution of 0.25 mg/ml. Concentration is measured by UV-Vis.

### SDS-PAGE



Human NSE / ENO2 / Enolase 2 Protein (His Tag)  
SDS-PAGE