

Human KIRREL2 / NEPH3 (His Tag) recombinant protein



Catalog Number: 503211

General Information

Gene Name Synonym

Kin of irregular chiasm-like protein 2; Nephrin-like protein 3

Protein Construction

A DNA sequence encoding the human KIRREL2 (NP_115499.4) (Met1-Arg503) was expressed with a polyhistidine tag at the C-terminus.

Organism

Human

Expression Host

Human Cells

QC Testing

Purity

> 95 % as determined by SDS-PAGE.

Endotoxin

< 1.0 EU per μg protein as determined by the LAL method.

Stability

Samples are stable for up to twelve months from date of receipt at -70°C

Predicted N terminal

Gly 21

Molecular Mass

The recombinant human KIRREL2 consists 494 amino acids and predicts a molecular mass of 52.3 kDa.

Formulation

Lyophilized from sterile PBS, pH 7.4.

1. 5 % trehalose and mannitol are added as protectants before lyophilization.

2. Please contact us for any concerns or special requirements.

Usage Guide

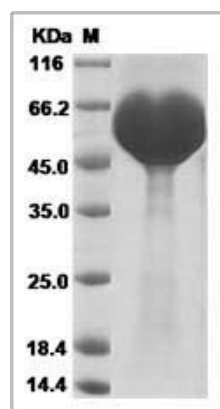
Storage

Store it under sterile conditions at -20°C to -80°C . It is recommended that the protein be aliquoted for optimal storage. Avoid repeated freeze-thaw cycles.

Reconstitution

Adding sterile water, prepare a stock solution of 0.25 mg/ml. Concentration is measured by UV-Vis.

SDS-PAGE



Human KIRREL2 / NEPH3 Protein (His Tag)