

General Information

Gene Name Synonym

Somatomedin-A; T3M-11-derived growth factor; Insulin-like growth factor II; Insulin-like growth factor II Ala-25 Del; Preptin

Protein Construction

A DNA sequence encoding the human IGF2 (ADO21454.1) (Ala25-Glu91) was expressed.

Organism

Human

Expression Host

Yeast

QC Testing

Purity

> 95 % as determined by SDS-PAGE

Endotoxin

Please contact us for more information.

Stability

Samples are stable for up to twelve months from date of receipt at -70°C

Predicted N terminal

Ala 25

Molecular Mass

The recombinant human IGF2 consists 67 amino acids and predicts a molecular mass of 7.5 kDa.

Formulation

Lyophilized from sterile 50 mM Tris, pH 8.0.

1. 5 % trehalose and mannitol are added as protectants before lyophilization.

2. Please contact us for any concerns or special requirements.

Usage Guide

Storage

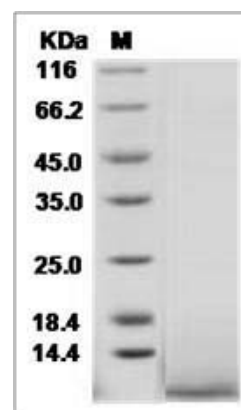
Store it under sterile conditions at -20°C to -80°C.

It is recommended that the protein be aliquoted for optimal storage. Avoid repeated freeze-thaw cycles.

Reconstitution

Adding sterile water, prepare a stock solution of 0.25 mg/ml. Concentration is measured by UV-Vis.

SDS-PAGE



Human IGF-2 / IGF-II Protein