

# EFS antibody

Catalog Number: 110211

## Product name

EFS antibody

IP: 1:200-1:1000

IF: 1:10-1:100

## Specificity

Human, Mouse, Rat; other species not tested.

## Antibody description

EFS Rabbit Polyclonal antibody. Positive IP detected in mouse thymus tissue. Positive WB detected in mouse thymus tissue, human placenta tissue. Positive IF detected in HepG2 cells. Observed molecular weight by Western-blot: 80-90 kDa

## Preparation

This antibody was obtained by immunization of EFS recombinant protein (Accession Number: NM\_032459). Purification method: Antigen affinity purified.

## Formulation

PBS with 0.02% sodium azide and 50% glycerol pH 7.3.

## Storage

Store at -20°C. DO NOT ALIQUOT

## Clonality

Polyclonal

## Ig Type

Rabbit IgG

## Applications

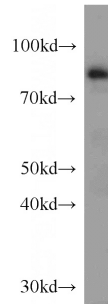
ELISA, WB, IF, IP

## Dilutions

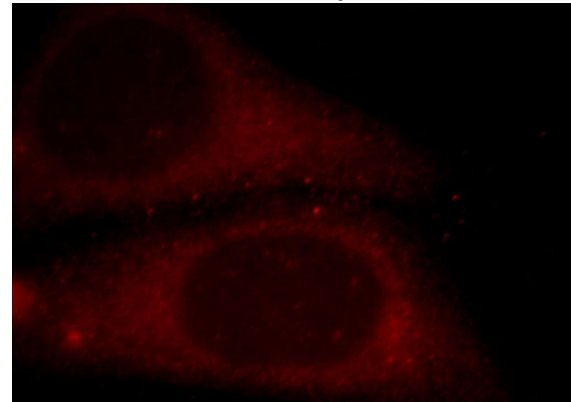
Recommended Dilution:

WB: 1:500-1:5000

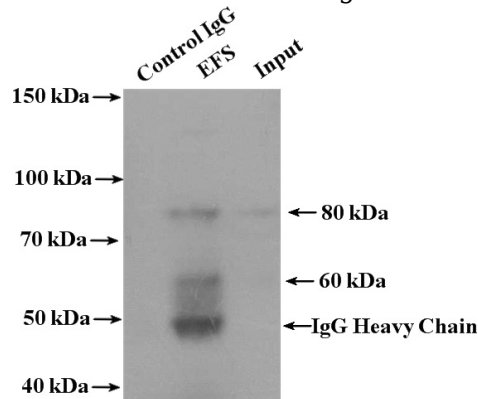
## Validations



mouse thymus tissue were subjected to SDS PAGE followed by western blot with Catalog No:110211(EFS antibody) at dilution of 1:300



Immunofluorescent analysis of HepG2 cells, using EFS antibody Catalog No:110211 at 1:25 dilution and Rhodamine-labeled goat anti-rabbit IgG (red).



IP Result of anti-EFS (IP:Catalog No:110211, 4ug; Detection:Catalog No:110211 1:300) with mouse

# EFS antibody



Catalog Number: 110211

---

thymus tissue lysate 3200ug.