

Human SIGLEC5 (Fc Tag) recombinant protein



Catalog Number: 500211

General Information

Gene Name Synonym

CD33 antigen-like 2; Obesity-binding protein 2

Protein Construction

A DNA sequence encoding the human SIGLEC5 (O15389) (Met1-Thr 434) was expressed, fused with the Fc region of human IgG1 at the C-terminus.

Organism

Human

Expression Host

Human Cells

QC Testing

Purity

> 90 % as determined by SDS-PAGE

Endotoxin

< 1.0 EU per μg of the protein as determined by the LAL method

Stability

Samples are stable for up to twelve months from date of receipt at -70°C

Predicted N terminal

Glu 17

Molecular Mass

The recombinant human SIGLEC5 /Fc is a

disulfide-linked homodimer. The reduced monomer comprises 659 amino acids and has a predicted molecular mass of 73.4 kDa. The apparent molecular mass of the protein is approximately 74-93 kDa in SDS-PAGE under reducing conditions.

Formulation

Lyophilized from sterile PBS, pH 7.4

1. 5 % trehalose and mannitol are added as protectants before lyophilization.

2. Please contact us for any concerns or special requirements.

Usage Guide

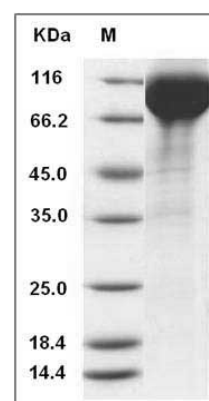
Storage

Store it under sterile conditions at -20°C to -80°C . It is recommended that the protein be aliquoted for optimal storage. Avoid repeated freeze-thaw cycles.

Reconstitution

Adding sterile water, prepare a stock solution of 0.25 mg/ml. Concentration is measured by UV-Vis.

SDS-PAGE



Human SIGLEC5 Protein (Fc Tag) SDS-PAGE