

# PINX1 antibody

Catalog Number: 113911

## Product name

PINX1 antibody

IHC: 1:20-1:200

IF: 1:50-1:500

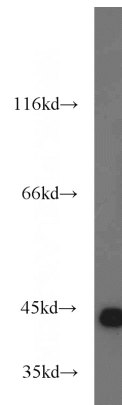
## Specificity

Human; other species not tested.

## Validations

## Antibody description

PINX1 Rabbit Polyclonal antibody. Positive WB detected in HeLa cells, A431 cells, Jurkat cells. Positive IHC detected in human skin tissue. Positive IF detected in HeLa cells. Observed molecular weight by Western-blot: 45 kDa



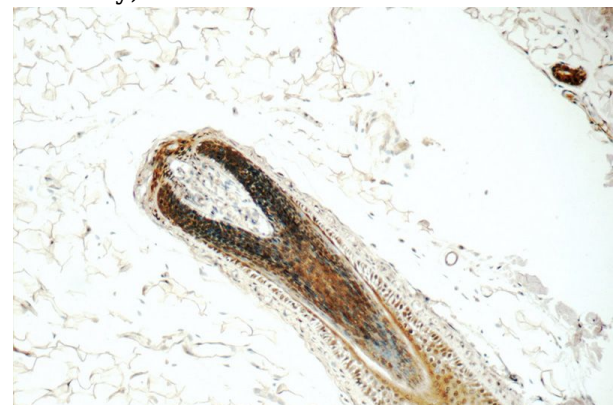
## Preparation

This antibody was obtained by immunization of PINX1 recombinant protein (Accession Number: NM\_017884). Purification method: Antigen affinity purified.

HeLa cells were subjected to SDS PAGE followed by western blot with Catalog No:113911(PINX1 antibody) at dilution of 1:1000

## Formulation

PBS with 0.1% sodium azide and 50% glycerol pH 7.3.



## Storage

Store at -20°C. DO NOT ALIQUOT

## Clonality

Polyclonal

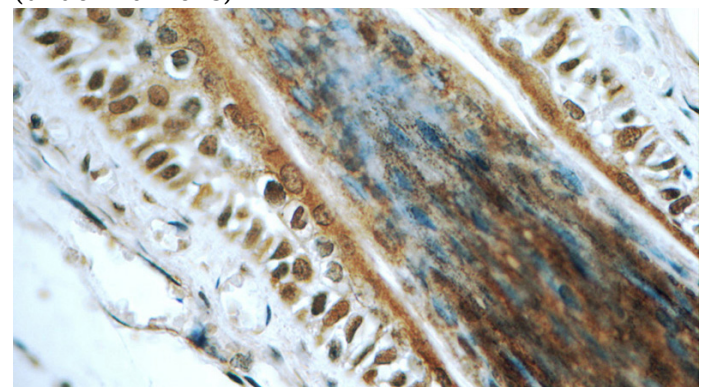
Immunohistochemistry of paraffin-embedded human skin tissue slide using Catalog No:113911(PINX1 Antibody) at dilution of 1:50 (under 10x lens)

## Ig Type

Rabbit IgG

## Applications

ELISA, WB, IHC, IF



## Dilutions

Recommended Dilution:

WB: 1:500-1:5000

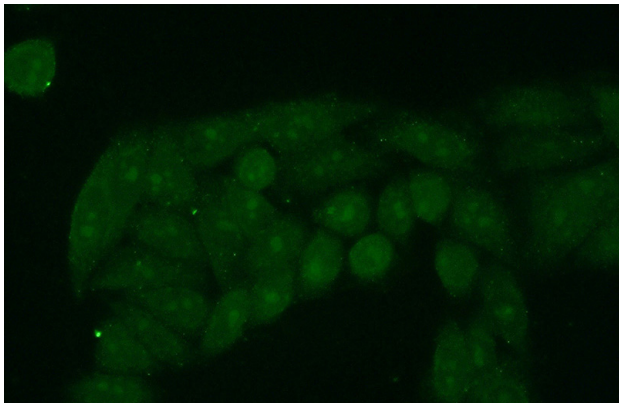
Immunohistochemistry of paraffin-embedded

# PINX1 antibody

Catalog Number: 113911

---

human skin tissue slide using Catalog No:113911(PINX1 Antibody) at dilution of 1:50 (under 40x lens)



Immunofluorescent analysis of (10% Formaldehyde) fixed HeLa cells using Catalog No:113911(PINX1 Antibody) at dilution of 1:50 and Alexa Fluor 488-conjugated AffiniPure Goat Anti-Rabbit IgG(H+L)