

# Rhesus CD200 (His Tag) recombinant protein



Catalog Number: 503911

## General Information

### Protein Construction

A DNA sequence encoding the rhesus CD200 (NP\_001244473.1) (Met1-Gly232) was expressed with a polyhistidine tag at the C-terminus.

### Organism

Rhesus

### Expression Host

Human Cells

## QC Testing

### Activity

Immobilized Rhesus CD200-His at 10 µg/ml (100 µl/well) can bind human CD200R1-Fch (Cat:503424), The EC<sub>50</sub> of human CD200R1-Fch (Cat:503424) is 0.49-1.15 µg/ml.

### Purity

> 95 % as determined by SDS-PAGE

### Endotoxin

< 1.0 EU per µg of the protein as determined by the LAL method

### Stability

Samples are stable for up to twelve months from date of receipt at -70°C

### Predicted N terminal

Gln 31

## Molecular Mass

The recombinant rhesus CD200 comprises 213 amino acids and has a calculated molecular mass of 24 KDa.

### Formulation

Lyophilized from sterile PBS, pH 7.4.

1. 5 % trehalose and mannitol are added as protectants before lyophilization.

2. Please contact us for any concerns or special requirements.

## Usage Guide

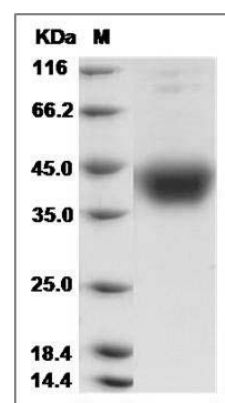
### Storage

Store it under sterile conditions at -20°C to -80°C. It is recommended that the protein be aliquoted for optimal storage. Avoid repeated freeze-thaw cycles.

### Reconstitution

Adding sterile water, prepare a stock solution of 0.25 mg/ml. Concentration is measured by UV-Vis.

## SDS-PAGE



Cynomolgus CD200 Protein (His Tag) SDS-PAGE