

# CPLX2 antibody



Catalog Number: 109511

## Product name

CPLX2 antibody

IP: 1:200-1:2000

IHC: 1:20-1:200

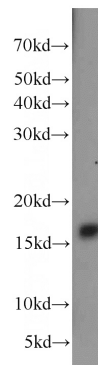
## Specificity

Human, Mouse, Rat; other species not tested.

## Antibody description

CPLX2 Rabbit Polyclonal antibody. Positive IHC detected in human brain tissue. Positive IP detected in SH-SY5Y cells. Positive WB detected in human brain tissue, mouse brain tissue. Observed molecular weight by Western-blot: 18-20 kDa

## Validations



## Preparation

This antibody was obtained by immunization of CPLX2 recombinant protein (Accession Number: XM\_005265799). Purification method: Antigen affinity purified.

human brain tissue were subjected to SDS PAGE followed by western blot with Catalog No:109511(CPLX2 antibody) at dilution of 1:1000

## Formulation

PBS with 0.02% sodium azide and 50% glycerol pH 7.3.

## Storage

Store at -20°C. DO NOT ALIQUOT

## Clonality

Polyclonal

## Ig Type

Rabbit IgG

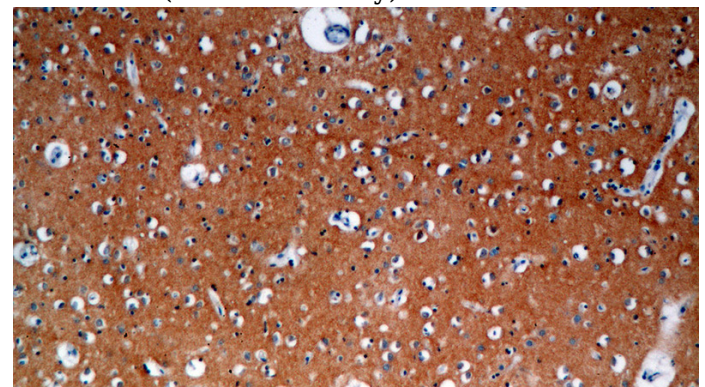
## Applications

ELISA, WB, IHC, IP

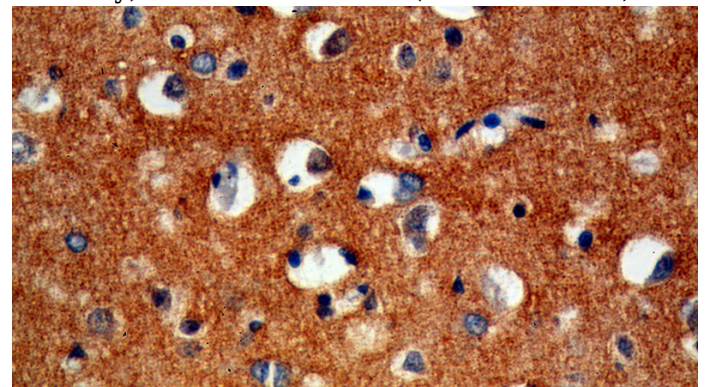
## Dilutions

Recommended Dilution:

WB: 1:500-1:5000



Immunohistochemical of paraffin-embedded human brain using Catalog No:109511(CPLX2 antibody) at dilution of 1:100 (under 10x lens)



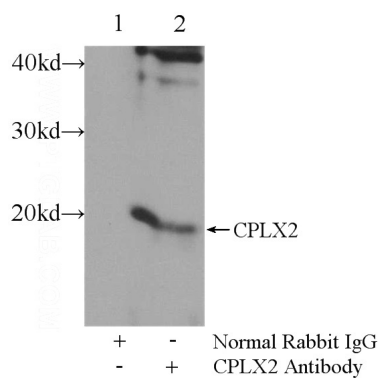
Immunohistochemical of paraffin-embedded human brain using Catalog No:109511(CPLX2

# CPLX2 antibody

Catalog Number: 109511

---

antibody) at dilution of 1:100 (under 40x lens)



IP Result of anti-CPLX2 (IP:Catalog No:109511, 3ug; Detection:Catalog No:109511 1:700) with SH-SY5Y cells lysate 800ug.