

Anti-malE antibody



Catalog Number: 176511

Product name

Anti-malE antibody

Specificity

E.coli

Antibody description

Rabbit monoclonal antibody to malE

Preparation

This antigen of this antibody was synthetic peptide within escherichia coli mbp aa 330-370.

Formulation

Liquid, 1*TBS (pH7.4), 0.05% BSA, 40% Glycerol.
Preservative: 0.05% Sodium Azide.

Storage

Store at +4°C after thawing. Aliquot store at -20°C or -80°C. Avoid repeated freeze / thaw cycles.

Clonality

Monoclonal

Ig Type

Rabbit IgG

Applications

WB, IP

Dilutions

WB: 1:1,000-1:5,000

IP: 2-5 µg/ml.

Validations

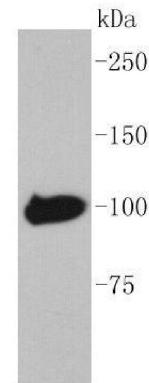


Fig1::; Western blot analysis of Maltose Binding Protein on recombinant MBP-tag protein lysates using anti-Maltose Binding Protein antibody at 1/1,000 dilution.

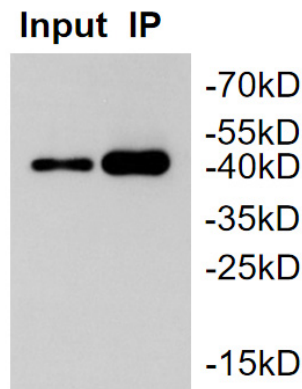


Fig2::; MBP tag was immunoprecipitated in 2µg MBP Tag fusion protein lysate with 176511# at 2 µg/20 µl agarose. Western blot was performed from the immunoprecipitate using 176511# at 1/1,000 dilution. Anti-Rabbit IgG - HRP Secondary Antibody (HA1001) at 1:50,000 dilution was used for 60 mins at room temperature.; Lane 1: MBP Tag fusion protein lysate (input).; Lane 2: 176511# IP in MBP Tag fusion protein lysate.; Blocking/Dilution buffer: 5% NFDN/TBST