

# Anti-FKBP12/FKBP1A antibody



Catalog Number: 102511

## Product name

Anti-FKBP12/FKBP1A antibody

## Immunogen

[Human FKBP12/FKBP1A \(His Tag\) recombinant protein](#)

## Specificity

Human FKBP1A / FKBP12

## Antibody description

Rabbit polyclonal to FKBP12/FKBP1A

## Preparation

Produced in rabbits immunized with purified, recombinant Human FKBP1A (rh FKBP1A; NP\_463460; Met 1-Glu 108). FKBP1A specific IgG was purified by human FKBP1A affinity chromatography.

## Formulation

0.2 µm filtered solution in PBS with 5% trehalose

## Storage

This antibody can be stored at 2°C-8°C for one month without detectable loss of activity. Antibody products are stable for twelve months from date of receipt when stored at -20°C to -80°C.

Preservative-Free.

Sodium azide is recommended to avoid contamination (final concentration 0.05%-0.1%). It is toxic to cells and should be disposed of

properly. Avoid repeated freeze-thaw cycles.

## Clonality

Polyclonal

## Ig Type

Rabbit IgG

## Applications

ELISA, WB

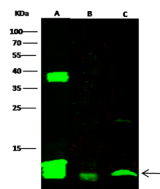
## Dilutions

WB: 2-10 µg/mL

ELISA: 0.5-1 µg/mL

This antibody can be used at 0.5-1 µg/mL with the appropriate secondary reagents to detect Human FKBP12. The detection limit for Human FKBP12 is approximately 0.0195 ng/well.

## Validations



Items	Lanes	A	B	C
Sample (whole cell lysate)		SH-SY5Y	HL-60	U937
Sample Volume (µg/lane)		60	30	60
Gel	13% SDS-PAGE reducing gel			
Recommended Concentration	2-10 µg/ml			
Secondary Antibody	Dylight 800-labeled Antibody to Rabbit IgG (H+L), at 1:5000 dilution.			

FKBP12 / FKBP1A Antibody, Rabbit PAb, Antigen Affinity Purified, Western blot