

Anti-DLL4 antibody



Catalog Number: 175111

Product name

Anti-DLL4 antibody

Specificity

Human, Rat

Antibody description

Rabbit polyclonal antibody to DLL4

Preparation

This antigen of this antibody was peptide.

Formulation

Liquid, 1*PBS (pH7.4), 0.2% BSA, 50% Glycerol.
Preservative: 0.05% Sodium Azide.

Storage

Store at +4°C after thawing. Aliquot store at -20°C or -80°C. Avoid repeated freeze / thaw cycles.

Clonality

Polyclonal

Ig Type

Rabbit IgG

Applications

WB, ICC, IHC-P, FC

Dilutions

WB: 1:500-1:1,000

ICC: 1:50-1:200

IHC-P: 1:50-1:200

FC: 1:50-1:100

Validations

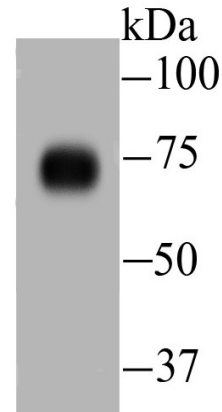


Fig1: Western blot analysis of DLL4 on human lung tissue lysate using anti-DLL4 antibody at

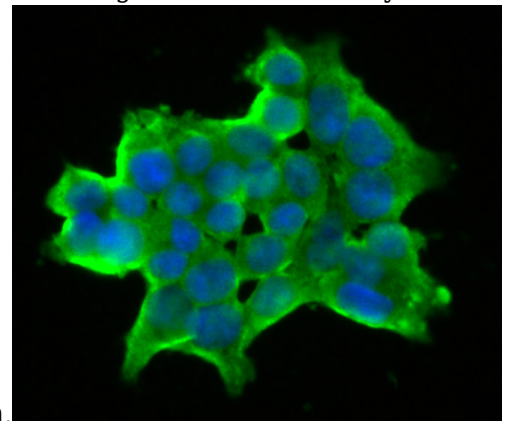


Fig2: ICC staining DLL4 in 293T cells (green). The nuclear counter stain is DAPI (blue). Cells were fixed in paraformaldehyde, permeabilised with 0.25% Triton X100/PBS.

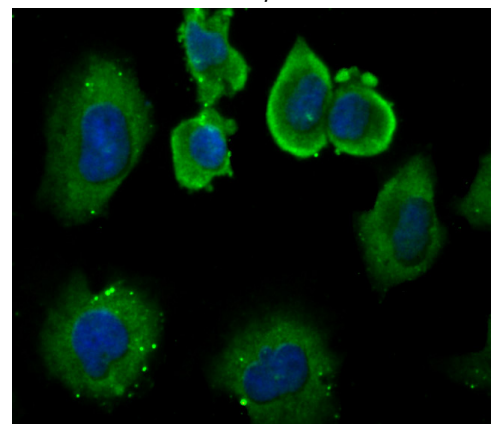


Fig3: ICC staining DLL4 in HUVEC cells (green). The nuclear counter stain is DAPI (blue). Cells were fixed in paraformaldehyde, permeabilised with 0.25% Triton X100/PBS.

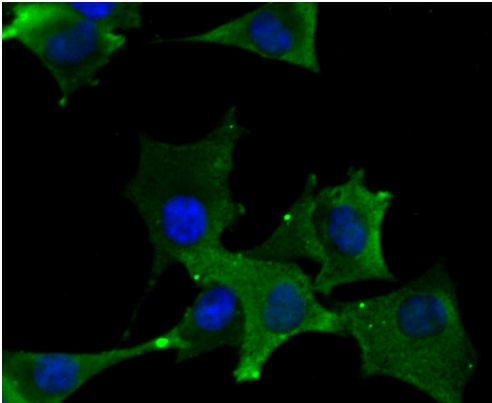


Fig4: ICC staining DLL4 in PMVEC cells (green). The nuclear counter stain is DAPI (blue). Cells were fixed in paraformaldehyde, permeabilised with 0.25% Triton X100/PBS.

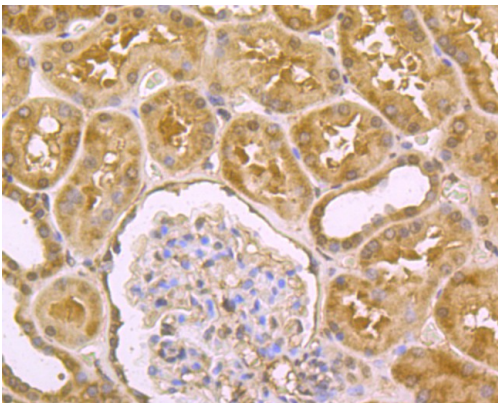


Fig5: Immunohistochemical analysis of paraffin-embedded human kidney tissue using anti-DLL4 antibody. Counter stained with hematoxylin.

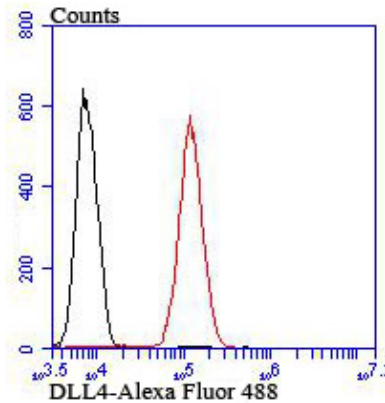


Fig6: Flow cytometric analysis of 293T cells with DLL4 antibody at 1/100 dilution (red) compared with an unlabelled control (cells without incubation with primary antibody; black). Alexa Fluor 488-conjugated goat anti-rabbit IgG was used as the secondary antibody.