

# CADM1 antibody



Catalog Number: 108811

---

## Product name

CADM1 antibody

## Specificity

Human, Mouse, Rat; other species not tested.

## Antibody description

CADM1 Rabbit Polyclonal antibody. Positive WB detected in mouse liver tissue, A549 cells, human placenta tissue, mouse lung tissue. Observed molecular weight by Western-blot: 49-60 kDa

## Preparation

This antibody was obtained by immunization of CADM1 recombinant protein (Accession Number: BC047021). Purification method: Antigen affinity purified.

## Formulation

PBS with 0.02% sodium azide and 50% glycerol pH 7.3.

## Storage

Store at -20°C. DO NOT ALIQUOT

## Clonality

Polyclonal

## Ig Type

Rabbit IgG

## Applications

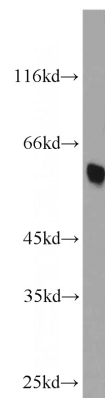
ELISA, WB

## Dilutions

Recommended Dilution:

WB: 1:200-1:2000

## Validations



mouse liver tissue were subjected to SDS PAGE followed by western blot with Catalog No:108811(CADM1 antibody) at dilution of 1:1000