

Human KDR recombinant protein (C-His)



Catalog Number: 514811

General Information

Gene Name Synonym

A type III receptor tyrosine kinase, isoform CRA_a

Protein Construction

A DNA sequence encoding the human KDR (NP_002244.1) (Met1-Lys327) was expressed with a polyhistidine tag at the C-terminus.

Organism

Human

Expression Host

Human Cells

QC Testing

Purity

> 95 % as determined by SDS-PAGE.

Endotoxin

<1.0 EU per µg protein as determined by the LAL method.

Stability

Samples are stable for up to twelve months from date of receipt at -70°C

Predicted N terminal

Ala 20

Molecular Mass

The recombinant human KDR consists of 319

amino acids and predicts a molecular mass of 35.9 kDa.

Formulation

Lyophilized from sterile PBS, pH 7.4.

1. Normally 5 % - 8 % trehalose, mannitol and 0.01% Tween80 are added as protectants before lyophilization. Specific concentrations are included in the hardcopy of COA.

2. Please contact us for any concerns or special requirements.

Usage Guide

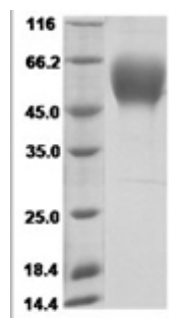
Storage

Store it under sterile conditions at -20°C to -80°C. It is recommended that the protein be aliquoted for optimal storage. Avoid repeated freeze-thaw cycles.

Reconstitution

A hardcopy of COA with reconstitution instruction is sent along with the products. Please refer to it for detailed information.

SDS-PAGE



Human VEGFR2 / Flk-1 / CD309 / KDR Protein (Domain 1&2&3, His Tag)