

# PHF2 antibody

Catalog Number: 113811

## Product name

PHF2 antibody

IP: 1:200-1:2000

IHC: 1:20-1:200

## Specificity

Human; other species not tested.

## Antibody description

PHF2 Rabbit Polyclonal antibody. Positive IHC detected in human cervical cancer tissue. Positive WB detected in Jurkat cells. Positive IP detected in HeLa cells. Observed molecular weight by Western-blot: 150 kDa

## Preparation

This antibody was obtained by immunization of PHF2 recombinant protein (Accession Number: BC152437). Purification method: Antigen affinity purified.

## Formulation

PBS with 0.1% sodium azide and 50% glycerol pH 7.3.

## Storage

Store at -20°C. DO NOT ALIQUOT

## Clonality

Polyclonal

## Ig Type

Rabbit IgG

## Applications

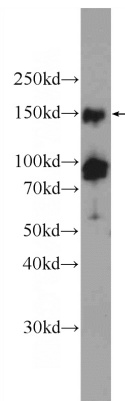
ELISA, WB, IHC, IP

## Dilutions

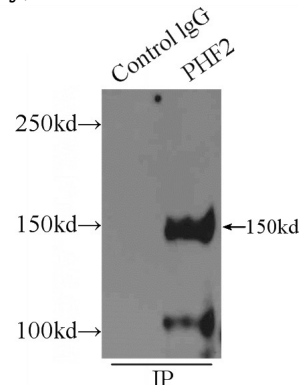
Recommended Dilution:

WB: 1:200-1:1000

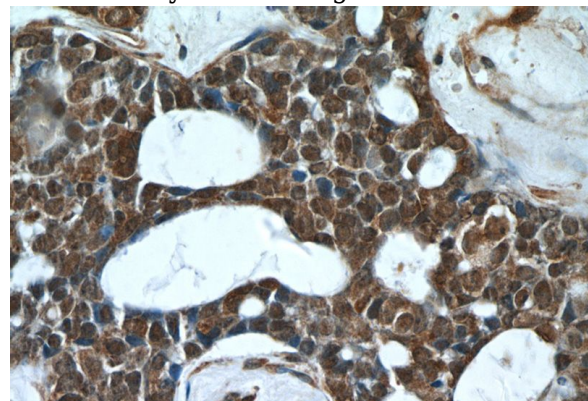
## Validations



Jurkat cells were subjected to SDS PAGE followed by western blot with Catalog No:113811(PHF2 Antibody) at dilution of 1:300



IP Result of anti-PHF2 (IP:Catalog No:113811, 4ug; Detection:Catalog No:113811 1:500) with HeLa cells lysate 1800ug.



Immunohistochemistry of paraffin-embedded human cervical cancer tissue slide using Catalog

# PHF2 antibody



Catalog Number: 113811

---

No:113811(PHF2 Antibody) at dilution of 1:50 (under 40x lens)