

Anti-CTAGE1 antibody



Catalog Number: 142811

Product name

Anti-CTAGE1 antibody

Specificity

Human CTAGE1

Antibody description

Rabbit Polyclonal to Human CTAGE1

Preparation

Produced in rabbits immunized with a synthetic peptide corresponding to the N-terminus of the Human CTAGE1, and purified by antigen affinity chromatography.

Formulation

0.2 µm filtered solution in PBS

Storage

This antibody can be stored at 2°C-8°C for one month without detectable loss of activity. Antibody products are stable for twelve months from date of receipt when stored at -20°C to -80°C.

Preservative-Free.

Sodium azide is recommended to avoid contamination (final concentration 0.05%-0.1%). It is toxic to cells and should be disposed of properly. Avoid repeated freeze-thaw cycles.

Clonality

Polyclonal

Ig Type

Rabbit IgG

Applications

WB, IP

Dilutions

WB: 5-20 µg/ml

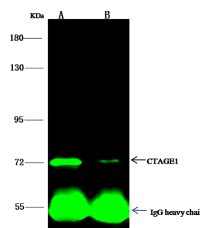
IP: 1-4 µl/mg of lysate

Validations



Lanes	A
Items	
Sample (whole cell lysate)	MDA MB453
Sample Volume (µg/lane)	30
Gel	13% SDS-PAGE reducing gel
Recommended Concentration	5-20 µg/ml
Secondary Antibody	Dylight 800 labeled Antibody to Rabbit IgG (H+L), at 1:5000 dilution.
Developed using Odyssey imaging system.	
Explanation	Predicted band size : 85 kDa Observed band size : 85 kDa

Human CTAGE1 Western blot (WB) 15629



Lanes	A	B
Items		
Sample (whole cell lysate)	293T	HeLa
Sample quantity	0.5 mg	
IP antibody quantity	2 µg	
Protein G agarose	15 µl of 50% Protein G Agarose	
Gel	7.5% SDS-PAGE reducing gel	
Primary antibody	K121-SMCC-sinoA3656+K121-SMCC-sinoA3810 antibody at 1.0 µg/ml	
Secondary antibody	Dylight 800-labeled antibody to rabbit IgG (H+L), at 1:5000 dilution	

Human CTAGE1 Immunoprecipitation(IP) 15630