

CLYBL antibody



Catalog Number: 109411

Product name

CLYBL antibody

Specificity

human, mouse, rat; other species not tested.

Antibody description

CLYBL Rabbit Polyclonal antibody. Positive WB detected in HeLa cells, HepG2 cells, human heart tissue. Positive IHC detected in human liver. Observed molecular weight by Western-blot: 37kd

Preparation

This antibody was obtained by immunization of CLYBL recombinant protein (Accession Number: NM_001393358). Purification method: Antigen affinity purified.

Formulation

PBS with 0.02% sodium azide and 50% glycerol pH 7.3.

Storage

Store at -20°C. DO NOT ALIQUOT

Clonality

Polyclonal

Ig Type

Rabbit IgG

Applications

ELISA, WB, IHC

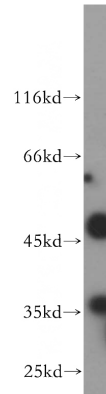
Dilutions

Recommended Dilution:

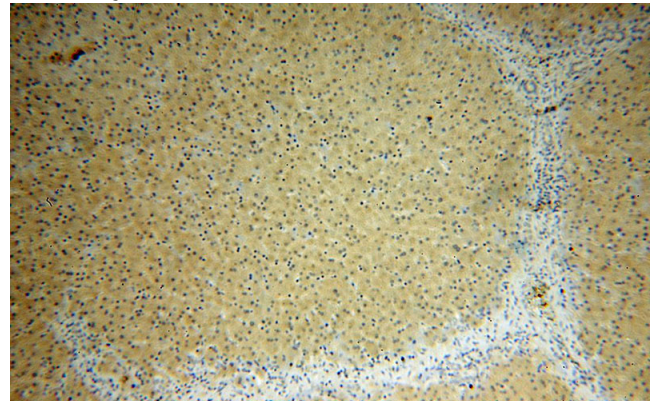
WB: 1:200-1:2000

IHC: 1:20-1:200

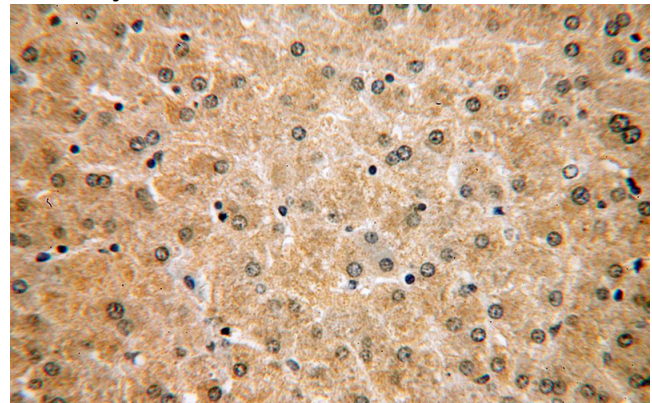
Validations



HeLa cells were subjected to SDS PAGE followed by western blot with Catalog No:109411(CLYBL antibody) at dilution of 1:600



Immunohistochemical of paraffin-embedded human liver using Catalog No:109411(CLYBL antibody) at dilution of 1:50 (under 10x lens)



Immunohistochemical of paraffin-embedded human liver using Catalog No:109411(CLYBL antibody) at dilution of 1:50 (under 40x lens)