

# LYPLAL1 antibody



Catalog Number: 112411

## Product name

LYPLAL1 antibody

WB: 1:200-1:2000

IHC: 1:20-1:200

## Immunogen

[Human LYPLAL1 Recombinant protein \(GST tag\)](#)

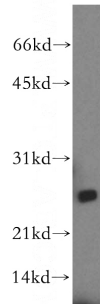
## Validations

## Specificity

human, mouse; other species not tested.

## Antibody description

LYPLAL1 Rabbit Polyclonal antibody. Positive IHC detected in human kidney. Positive WB detected in mouse skeletal muscle tissue. Observed molecular weight by Western-blot: 26kd



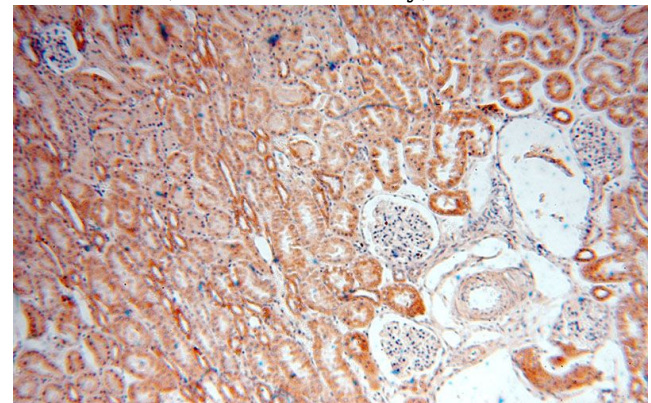
## Preparation

This antibody was obtained by immunization of LYPLAL1 recombinant protein (Accession Number: XM\_047445134). Purification method: Antigen affinity purified.

mouse skeletal muscle tissue were subjected to SDS PAGE followed by western blot with Catalog No:112411(LYPLAL1 antibody) at dilution of 1:400

## Formulation

PBS with 0.02% sodium azide and 50% glycerol pH 7.3.



## Storage

Store at -20°C. DO NOT ALIQUOT

## Clonality

Polyclonal

## Ig Type

Rabbit IgG

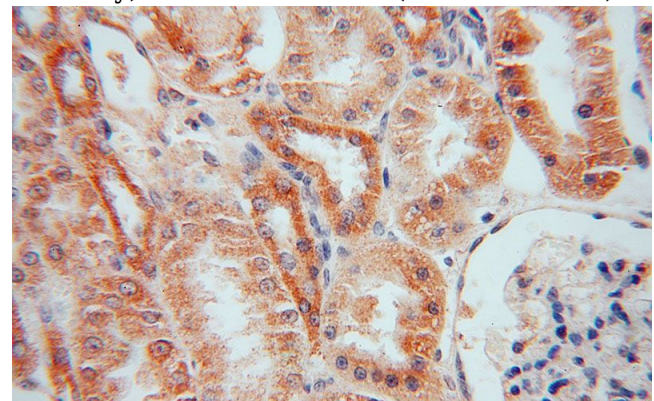
## Applications

ELISA, WB, IHC

## Dilutions

Recommended Dilution:

Immunohistochemical of paraffin-embedded human kidney using Catalog No:112411(LYPLAL1 antibody) at dilution of 1:50 (under 10x lens)



Immunohistochemical of paraffin-embedded human kidney using Catalog No:112411(LYPLAL1

# LYPLAL1 antibody



Catalog Number: 112411

---

antibody) at dilution of 1:50 (under 40x lens)