

Cytokeratin 7-specific antibody



Catalog Number: 107011

Product name

Cytokeratin 7-specific antibody

Specificity

Human, Mouse; other species not tested.

Antibody description

Cytokeratin 7-specific Rabbit Polyclonal antibody. Positive IHC detected in human placenta tissue, human breast cancer tissue, human heart tissue, human liver tissue, human lung cancer tissue, human spleen tissue, human stomach cancer tissue, human testis tissue, mouse lung tissue. Positive IF detected in HepG2 cells. Positive WB detected in mouse liver tissue, HepG2 cells. Positive IP detected in mouse liver tissue. Observed molecular weight by Western-blot: 54 kDa

Preparation

This antibody was obtained by immunization of Peptide (Accession Number: NM_005556). Purification method: Antigen affinity purified.

Formulation

PBS with 0.02% sodium azide and 50% glycerol pH 7.3.

Storage

Store at -20°C. DO NOT ALIQUOT

Clonality

Polyclonal

Ig Type

Rabbit IgG

Applications

ELISA, WB, IHC, IP, IF

Dilutions

Recommended Dilution:

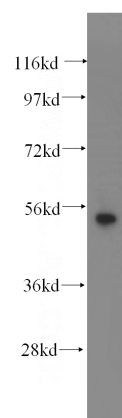
WB: 1:500-1:5000

IP: 1:200-1:2000

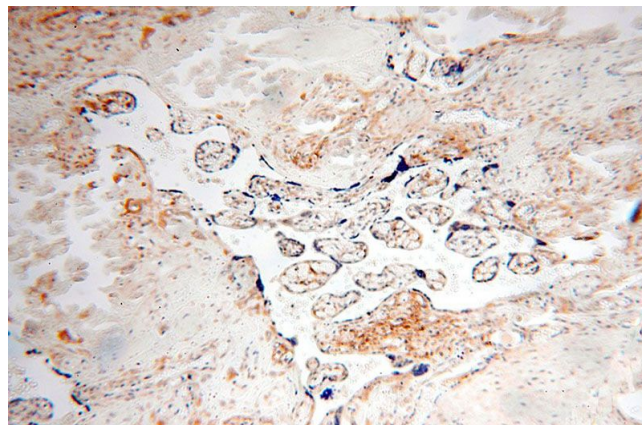
IHC: 1:20-1:200

IF: 1:50-1:500

Validations



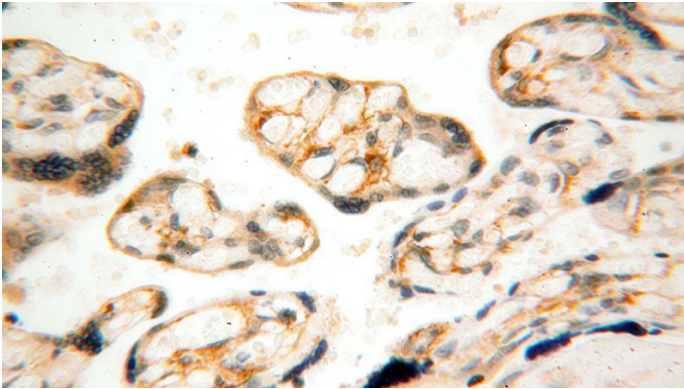
mouse liver tissue were subjected to SDS PAGE followed by western blot with Catalog No:109812(KRT7-specific antibody) at dilution of 1:500



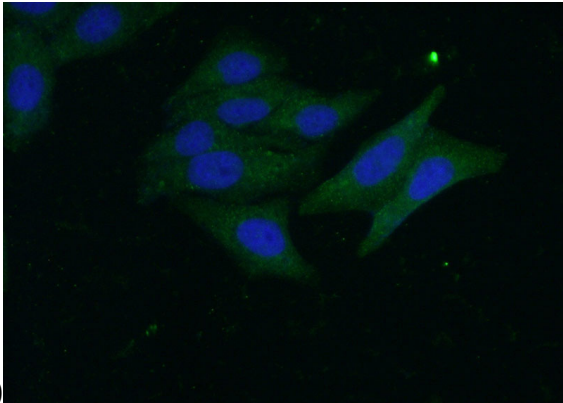
Immunohistochemical of paraffin-embedded human placenta using Catalog No:109812(KRT7-specific antibody) at dilution of 1:100 (under 10x lens)

Cytokeratin 7-specific antibody

Catalog Number: 107011

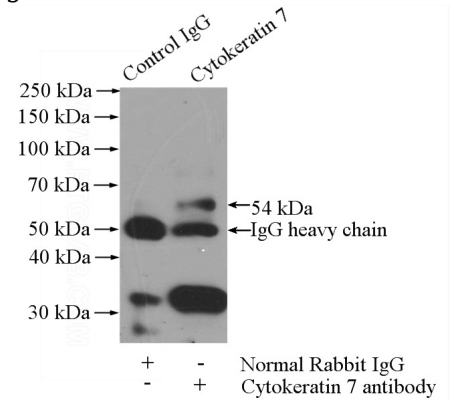


Immunohistochemical of paraffin-embedded human placenta using Catalog No:109812(KRT7-specific antibody) at dilution of 1:100 (under 40x



lens)

Immunofluorescent analysis of (-20oc Ethanol) fixed HepG2 cells using Catalog No:109812(CK7-specific Antibody) at dilution of 1:50 and Alexa Fluor 488-conjugated AffiniPure Goat Anti-Rabbit



IgG(H+L)

IP Result of anti-CK7-specific (IP:Catalog No:109812, 4ug; Detection:Catalog No:109812 1:500) with mouse liver tissue lysate 4000ug.