

SETMAR Polyclonal Antibody



Catalog Number: 165011

Product name

SETMAR Polyclonal Antibody

Specificity

Human

Antibody description

Polyclonal antibody to SETMAR

Preparation

Antigen: Recombinant fusion protein containing a sequence corresponding to amino acids 20-300 of human SETMAR (NP_006506.3).

Formulation

PBS with 0.02% sodium azide, 50% glycerol, pH7.3.

Storage

Store at -20°C. Avoid freeze / thaw cycles.

Clonality

Polyclonal

Ig Type

Rabbit IgG

Applications

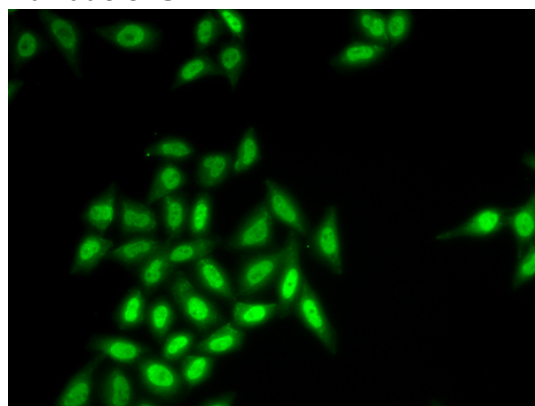
WB, IF

Dilutions

WB 1:500 - 1:2000

IF 1:20 - 1:50

Validations



Immunofluorescence - SETMAR Polyclonal Antibody

Immunofluorescence analysis of HeLa cells using SETMAR antibody .