

General Information

Gene Name Synonym

Caspin; Serpin F1; Stromal cell-derived factor 3

Protein Construction

A DNA sequence encoding the extracellular domain (Met 1-Thr 417) of mouse SerpinF1 (NP_035470.3) precursor was expressed with a C-terminal polyhistidine tag.

Organism

Mouse

Expression Host

Human Cells

QC Testing

Activity

Measured by its binding ability in a functional ELISA.

Immobilized mouse SERPINF1-His at 10 µg/ml (100 µl/well) can bind biotinylated human GST-CSNK2A1 (Cat:500524) with a linear range of 0.31-2.5 µg/ml.

Purity

> 95 % as determined by SDS-PAGE

Endotoxin

< 1.0 EU per µg of the protein as determined by the LAL method

Stability

Samples are stable for up to twelve months from date of receipt at -70°C

Predicted N terminal

Gln 20

Molecular Mass

The secreted recombinant mouse SerpinF1 consists of 409 amino acids and has a calculated molecular mass of 45.8 kDa. As a result of glycosylation, the recombinant protein migrates as an approximately 60-65 kDa protein in SDS-PAGE under reducing conditions.

Formulation

Lyophilized from sterile PBS, pH 7.4

1. 5 % trehalose and mannitol are added as protectants before lyophilization.

2. Please contact us for any concerns or special requirements.

Usage Guide

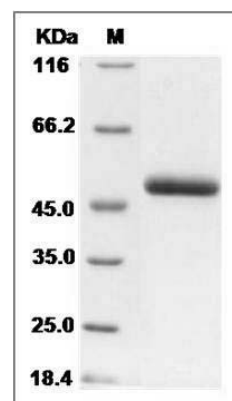
Storage

Store it under sterile conditions at -20°C to -80°C. It is recommended that the protein be aliquoted for optimal storage. Avoid repeated freeze-thaw cycles.

Reconstitution

Adding sterile water, prepare a stock solution of 0.25 mg/ml. Concentration is measured by UV-Vis.

SDS-PAGE



Mouse SerpinF1 / PEDF Protein (His Tag) SDS-PAGE