

Anti-Psg16 antibody



Catalog Number: 176701

Product name

Anti-Psg16 antibody

Specificity

Mouse

Antibody description

Rabbit polyclonal antibody to Psg16

Preparation

This antigen of this antibody was synthetic peptide within c-terminal human psg16.

Formulation

Liquid, 1*PBS (pH7.4), 0.2% BSA, 40% Glycerol. Preservative: 0.05% Sodium Azide.

Storage

Store at +4°C after thawing. Aliquot store at -20°C or -80°C. Avoid repeated freeze / thaw cycles.

Clonality

Polyclonal

Ig Type

Rabbit IgG

Applications

WB, ICC, FC

Dilutions

WB: 1:1000

ICC: 1:100-1:200

Validations

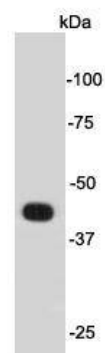
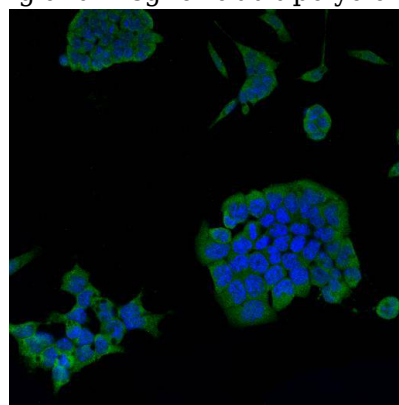


Fig1: Western blot analysis on mouse brain cell lysates using anti- Psg16 rabbit polyclonal



antibodies.

Fig2: ICC staining Psg16 in mouse embryonic stem cells D3 (green). Cells were fixed in paraformaldehyde, permeabilised with 0.25% Triton X100/PBS and counterstained with DAPI in order to highlight the nucleus (blue).