

# Anti-Phospho-eIF4E (Ser209) Rabbit antibody



Catalog Number: 166701

## Product name

Anti-Phospho-eIF4E (Ser209) Rabbit antibody

## Specificity

Human

## Antibody description

Phospho-eIF4E (Ser209) Rabbit polyclonal antibody

## Preparation

Antigen: Peptide sequence around phosphorylation site of serine 209 (S-G-S(p)-T-T) derived from Human eIF4E.

## Formulation

Supplied at 1.0mg/mL in phosphate buffered saline (without Mg<sup>2+</sup> and Ca<sup>2+</sup>), pH 7.4, 150mM NaCl, 0.02% sodium azide and 50% glycerol.

## Storage

Store at 4°C short term. Store at -20°C long term. Avoid freeze / thaw cycle.

## Clonality

Polyclonal

## Ig Type

Rabbit IgG

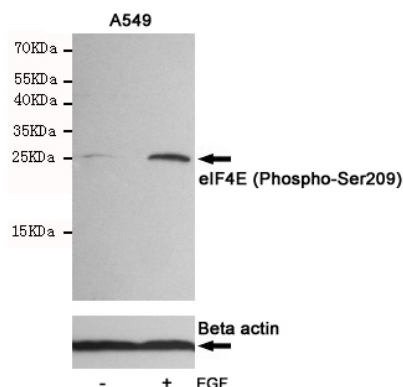
## Applications

WB, IHC-P, ICC/IF

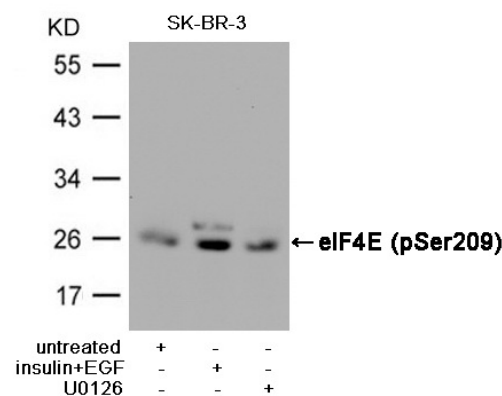
## Dilutions

WB:1/500-1/1000 ICC:1/100-1/200 IHC:1/50-1/100

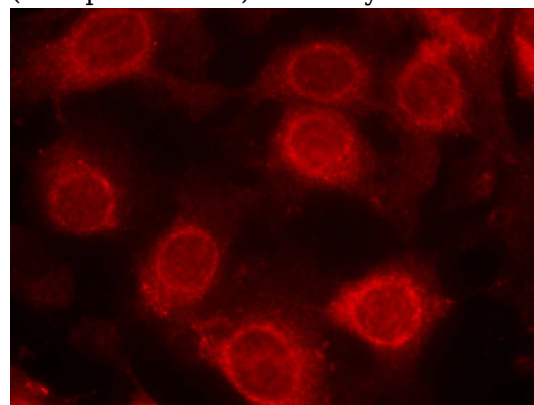
## Validations



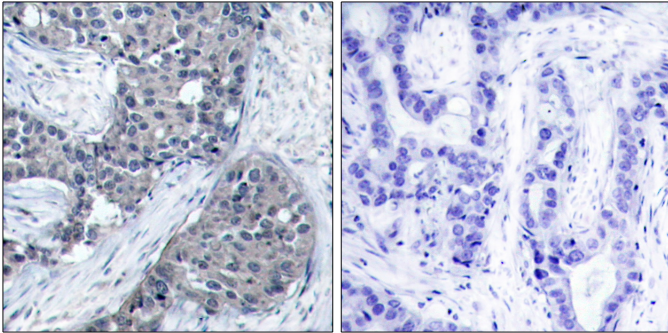
Western blot analysis of extracts from HeLa cells, untreated or treated with UV, using eIF4E (Phospho-Ser209) Rabbit pAb (166701, 1:500 diluted, upper) or Beta actin Mouse mAb (200068-8F10, lower).



Western blot analysis of extracts from SK-BR-3 cells, untreated or insulin and EGF treated, and pretreated with U0126 cells, using eIF4E (Phospho-Ser209) Antibody.



Immunofluorescence staining of methanol-fixed MCF cells using eIF4E (Phospho-Ser209) Antibody.



Immunohistochemical analysis of paraffin-embedded human breast carcinoma tissue using eIF4E (Phospho-Ser209) Antibody (left) or the same antibody preincubated with blocking peptide (right).