

MMP20 antibody



Catalog Number: 112701

Product name

MMP20 antibody

IF: 1:10-1:100

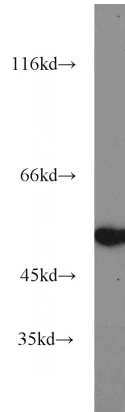
Specificity

Human, Mouse, Rat; other species not tested.

Validations

Antibody description

MMP20 Rabbit Polyclonal antibody. Positive IF detected in HeLa cells. Positive IHC detected in human liver cancer tissue. Positive WB detected in mouse brain tissue, rat brain tissue. Observed molecular weight by Western-blot: 54 kDa



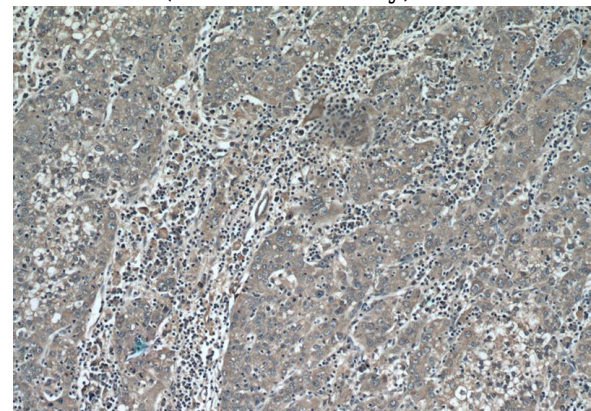
Preparation

This antibody was obtained by immunization of Peptide (Accession Number: NM_004771). Purification method: Antigen affinity purified.

mouse brain tissue were subjected to SDS PAGE followed by western blot with Catalog No:112701(MMP20 antibody) at dilution of 1:1000

Formulation

PBS with 0.02% sodium azide and 50% glycerol pH 7.3.



Storage

Store at -20°C. DO NOT ALIQUOT

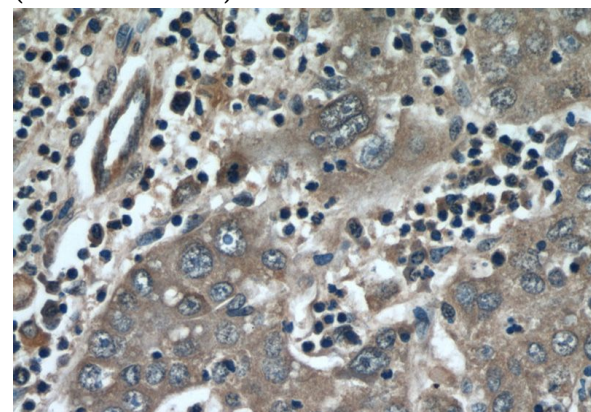
Clonality

Polyclonal

Immunohistochemical of paraffin-embedded human liver cancer using Catalog No:112701(MMP20 antibody) at dilution of 1:50 (under 10x lens)

Ig Type

Rabbit IgG



Applications

ELISA, WB, IHC, IF

Dilutions

Recommended Dilution:

WB: 1:500-1:5000

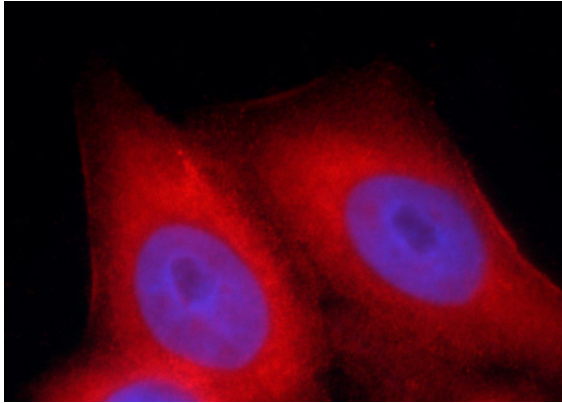
IHC: 1:20-1:200

Immunohistochemical of paraffin-embedded human liver cancer using Catalog

MMP20 antibody

Catalog Number: 112701

No:112701(MMP20 antibody) at dilution of 1:50
(under 40x lens)



Immunofluorescent analysis of HeLa cells using
Catalog No:112701(MMP20 Antibody) at dilution
of 1:25 and Rhodamine-Goat anti-Rabbit IgG