

# CHSY1 antibody



Catalog Number: 109301

## Product name

CHSY1 antibody

## Specificity

human, mouse, rat, zebrafish; other species not tested.

## Antibody description

CHSY1 Rabbit Polyclonal antibody. Positive WB detected in mouse spleen tissue, mouse heart tissue. Positive IHC detected in human lung cancer. Observed molecular weight by Western-blot: 66kd

## Preparation

This antibody was obtained by immunization of CHSY1 recombinant protein (Accession Number: NM\_014918). Purification method: Antigen affinity purified.

## Formulation

PBS with 0.02% sodium azide and 50% glycerol pH 7.3.

## Storage

Store at -20°C. DO NOT ALIQUOT

## Clonality

Polyclonal

## Ig Type

Rabbit IgG

## Applications

ELISA, WB, IHC

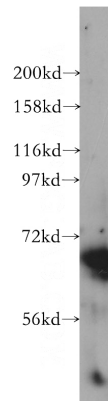
## Dilutions

Recommended Dilution:

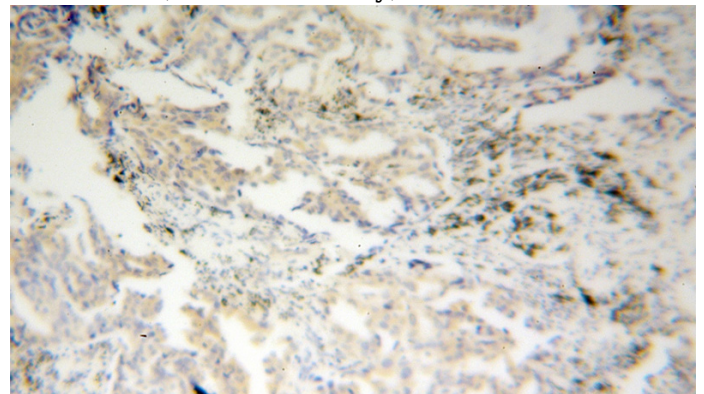
WB: 1:500-1:5000

IHC: 1:20-1:200

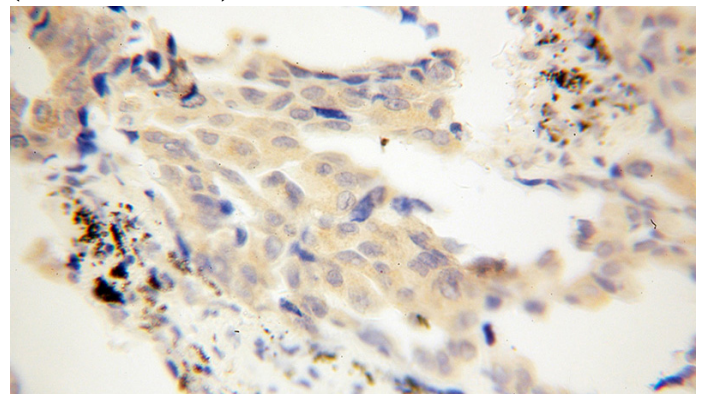
## Validations



mouse spleen tissue were subjected to SDS PAGE followed by western blot with Catalog No:109301(CHSY1 antibody) at dilution of 1:500



Immunohistochemical of paraffin-embedded human lung cancer using Catalog No:109301(CHSY1 antibody) at dilution of 1:100 (under 10x lens)



Immunohistochemical of paraffin-embedded human lung cancer using Catalog No:109301(CHSY1 antibody) at dilution of 1:100

# CHSY1 antibody



Catalog Number: 109301

---

(under 40x lens)