

# ATP6 antibody

Catalog Number: 108301

## Product name

ATP6 antibody

IHC: 1:20-1:200

IF: 1:20-1:200

## Specificity

Human, Mouse; other species not tested.

## Antibody description

ATP6 Rabbit Polyclonal antibody. Positive IF detected in HepG2 cells. Positive IHC detected in human skeletal muscle tissue, human liver cancer tissue. Positive WB detected in mouse heart tissue, mouse brain tissue. Observed molecular weight by Western-blot: 25-30 kDa

## Preparation

This antibody was obtained by immunization of Peptide (Accession Number: J01415). Purification method: Antigen affinity purified.

## Formulation

PBS with 0.02% sodium azide and 50% glycerol pH 7.3.

## Storage

Store at -20°C. DO NOT ALIQUOT

## Clonality

Polyclonal

## Ig Type

Rabbit IgG

## Applications

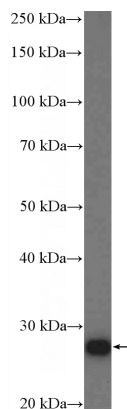
ELISA, WB, IF, IHC

## Dilutions

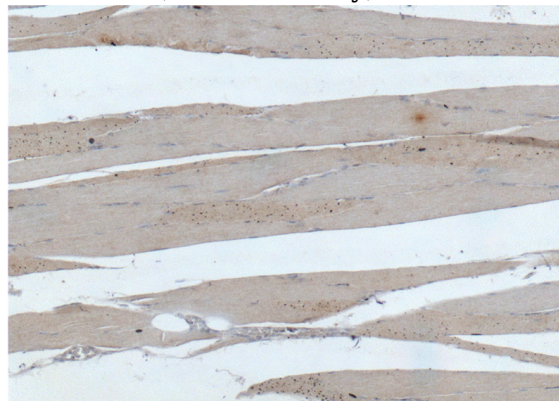
Recommended Dilution:

WB: 1:200-1:2000

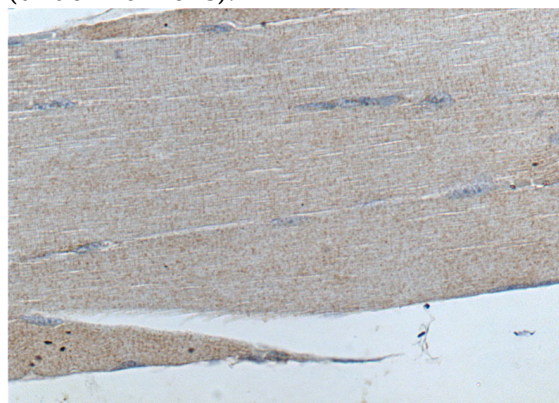
## Validations



mouse heart tissue were subjected to SDS PAGE followed by western blot with Catalog No:108301(ATP6 Antibody) at dilution of 1:600



Immunohistochemistry of paraffin-embedded human skeletal muscle tissue slide using Catalog No:108301(ATP6 Antibody) at dilution of 1:200 (under 10x lens).



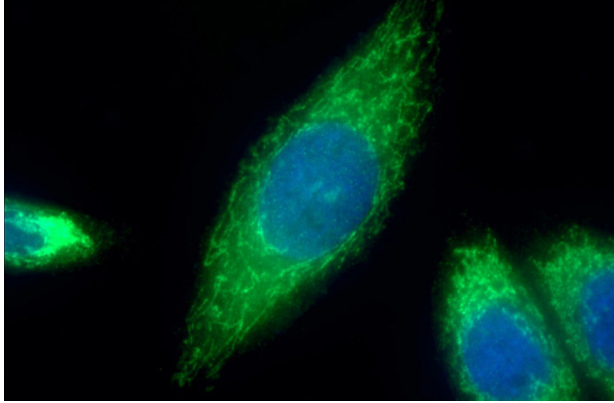
Immunohistochemistry of paraffin-embedded

# ATP6 antibody

Catalog Number: 108301

---

human skeletal muscle tissue slide using Catalog No:108301(ATP6 Antibody) at dilution of 1:200 (under 40x lens).



Immunofluorescent analysis of (10% Formaldehyde) fixed HepG2 cells using Catalog No:108301(ATP6 Antibody) at dilution of 1:50 and Alexa Fluor 488-conjugated AffiniPure Goat Anti-Rabbit IgG(H+L)