

# Anti-SMN/Gemin 1 (2F1) Mouse antibody



Catalog Number: 168301

## Product name

Anti-SMN/Gemin 1 (2F1) Mouse antibody

WB: 1/500 - 1/2000

IHC: 1/200 - 1/1000

## Specificity

Human, Monkey

FC: 1/200 - 1/400

ELISA: 1/10000

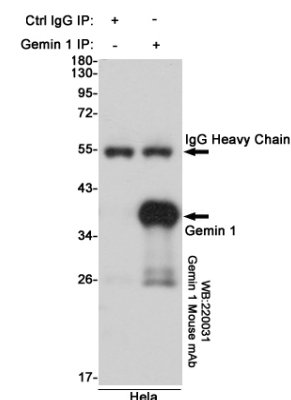
## Antibody description

SMN/Gemin 1 (2F1) Mouse monoclonal antibody

## Validations

## Preparation

Antigen: Purified recombinant fragment of human SMN1 expressed in E. Coli.



## Formulation

Ascitic fluid containing 0.03% sodium azide.

Immunoprecipitation analysis of HeLa cell lysates

## Storage

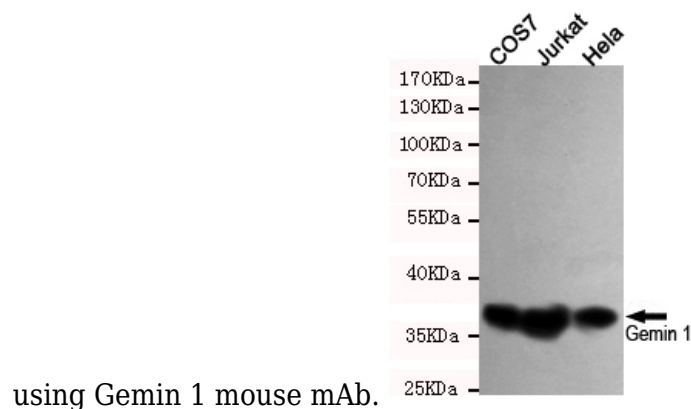
Store at 4°C short term. Store at -20°C long term. Avoid freeze / thaw cycle.

## Clonality

Monoclonal

## Ig Type

Mouse IgG1



using Gemin 1 mouse mAb.

## Applications

WB, IHC-P, FC, IP

Western blot detection of Gemin 1 in COS7, Jurkat and HeLa cell lysates using Gemin 1 mouse mAb (dilution 1:1000). Predicted band size: 35 Kda. Observed band size: 39KDa.

## Dilutions