

# SLC13A2 antibody

Catalog Number: 115301

## Product name

SLC13A2 antibody

## Specificity

Human, Mouse, Rat; other species not tested.

## Antibody description

SLC13A2 Rabbit Polyclonal antibody. Positive IHC detected in human kidney tissue. Positive IP detected in mouse kidney tissue.

## Preparation

This antibody was obtained by immunization of SLC13A2 recombinant protein (Accession Number: NM\_003984). Purification method: Antigen affinity purified.

## Formulation

PBS with 0.02% sodium azide and 50% glycerol pH 7.3.

## Storage

Store at -20°C. DO NOT ALIQUOT

## Clonality

Polyclonal

## Ig Type

Rabbit IgG

## Applications

ELISA, IP, IHC

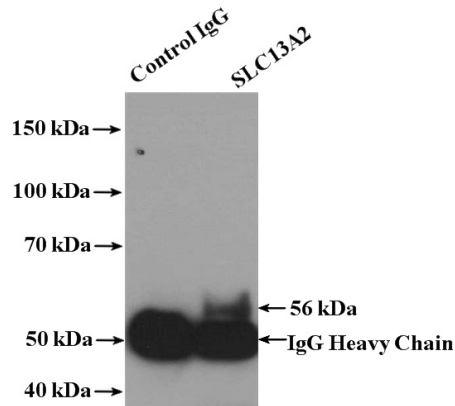
## Dilutions

Recommended Dilution:

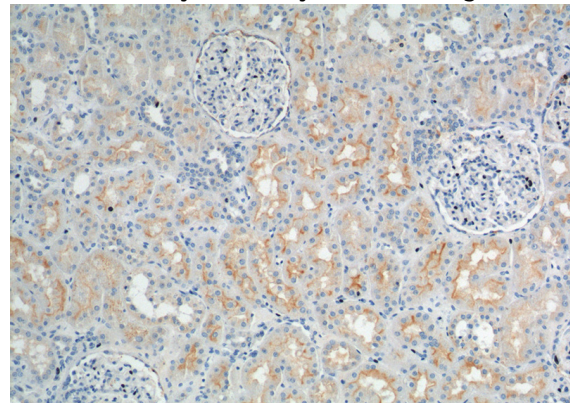
IP: 1:200-1:1000

IHC: 1:20-1:200

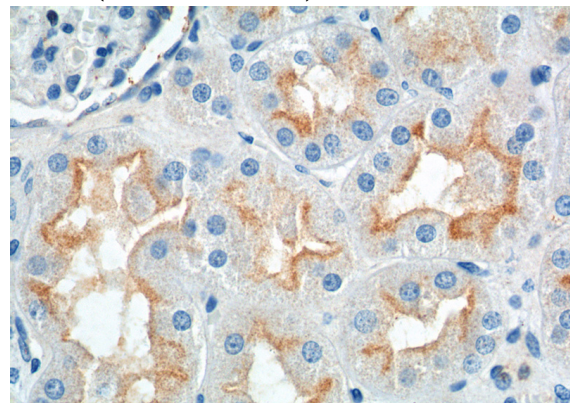
## Validations



IP Result of anti-SLC13A2 (IP: Catalog No: 115301, 4ug; Detection: Catalog No: 115301 1:300) with mouse kidney tissue lysate 4000ug.



Immunohistochemistry of paraffin-embedded human kidney tissue slide using Catalog No: 115301 (SLC13A2 Antibody) at dilution of 1:200 (under 10x lens).



Immunohistochemistry of paraffin-embedded human kidney tissue slide using Catalog No: 115301 (SLC13A2 Antibody) at dilution of 1:200 (under 40x lens).