

# Anti-Klrk1 antibody

Catalog Number: 175601

## Product name

Anti-Klrk1 antibody

## Specificity

Human, Mouse, Rat

## Antibody description

Rabbit polyclonal antibody to Klrk1

## Preparation

This antigen of this antibody was klh conjugated synthetic peptide derived from human nkg2d 121-219/219

## Formulation

Liquid, 0.01M TBS(pH7.4) with 1% BSA, 0.03% Proclin300 and 50% Glycerol.

## Storage

Store at -20°C for one year. Avoid repeated freeze/thaw cycles. The lyophilized antibody is stable at room temperature for at least one month and for greater than a year when kept at -20°C. When reconstituted in sterile pH 7.4 0.01M PBS or diluent of antibody the antibody is stable for at least two weeks at 2-4°C.

## Clonality

Polyclonal

## Ig Type

Rabbit IgG

## Applications

WB, FC

## Dilutions

WB:1:500-2000

FC:1µg/Test

## Validations

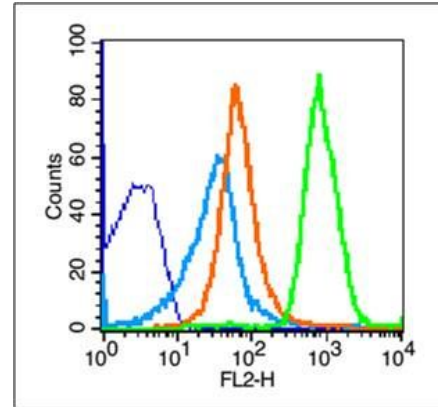
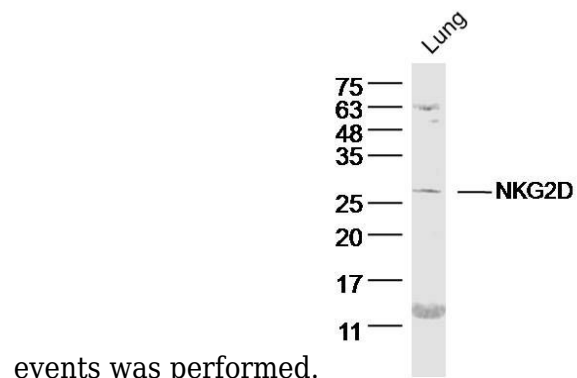


Fig1: Blank control (blue line): Mouse thymus cells (blue).; Primary Antibody (green line): Rabbit Anti-NKG2D antibody ; Dilution: 1µg /10<sup>6</sup> cells;; Isotype Control Antibody (orange line): Rabbit IgG .; Secondary Antibody (white blue line): Goat anti-rabbit IgG-PE; Dilution: 1µg /test.; Protocol; The cells were fixed with 70% methanol (Overnight at 4°C) . Cells stained with Primary Antibody for 30 min at room temperature. The cells were then incubated in 1 X PBS/2%BSA/10% goat serum to block non-specific protein-protein interactions followed by the antibody for 15 min at room temperature. The secondary antibody used for 40 min at room temperature. Acquisition of 20,000



events was performed.

Fig2: Sample: Lung (Mouse) Lysate at 40 ug; Primary: Anti- NKG2D at 1/300 dilution; Secondary: IRDye800CW Goat Anti-Rabbit IgG at 1/20000 dilution; Predicted band size: 25 kD; Observed band size: 26 kD