

RBM16 antibody



Catalog Number: 114601

Product name

RBM16 antibody

Immunogen

[Human RBM16 Recombinant protein \(His tag\)](#)

Specificity

Human, Mouse; other species not tested.

Antibody description

RBM16 Rabbit Polyclonal antibody. Positive IP detected in HeLa cells. Positive WB detected in HT-1080 cells, A549 cells, HeLa cells, L02 cells, NIH/3T3 cells. Positive IF detected in Hela cells, HepG2 cells. Positive IHC detected in human testis tissue, human cervical cancer tissue. Observed molecular weight by Western-blot: 170 kDa

Preparation

This antibody was obtained by immunization of RBM16 recombinant protein (Accession Number: NM_014892). Purification method: Antigen affinity purified.

Formulation

PBS with 0.02% sodium azide and 50% glycerol pH 7.3.

Storage

Store at -20°C. DO NOT ALIQUOT

Clonality

Polyclonal

Ig Type

Rabbit IgG

Applications

ELISA, WB, IF, IHC, IP

Dilutions

Recommended Dilution:

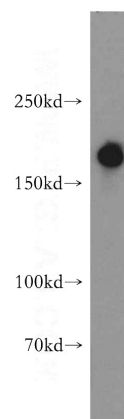
WB: 1:1000-1:10000

IP: 1:200-1:2000

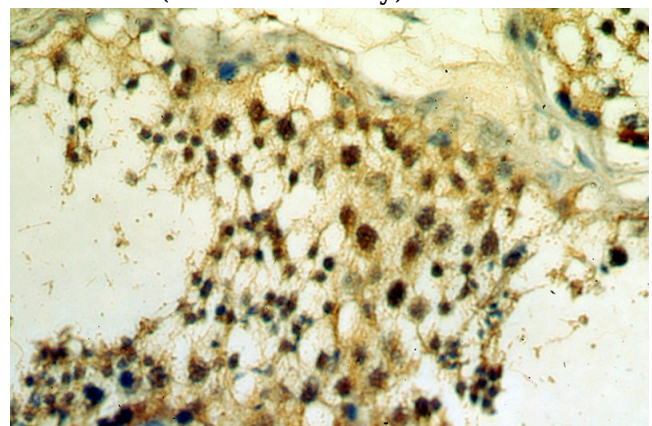
IHC: 1:20-1:200

IF: 1:10-1:100

Validations



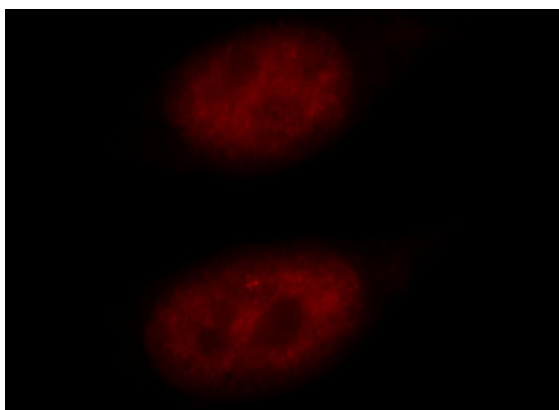
HT-1080 cells were subjected to SDS PAGE followed by western blot with Catalog No:114601(RBM16 antibody) at dilution of 1:2000



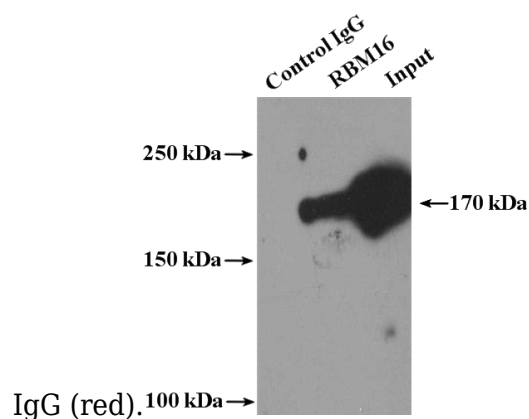
Immunohistochemical of paraffin-embedded human testis using Catalog No:114601(RBM16 antibody) at dilution of 1:100 (under 40x lens)

RBM16 antibody

Catalog Number: 114601



Immunofluorescent analysis of HeLa cells, using RBM16 antibody Catalog No:114601 at 1:25 dilution and Rhodamine-labeled goat anti-rabbit



IP Result of anti-RBM16 (IP:Catalog No:114601, 4ug; Detection:Catalog No:114601 1:800) with HeLa cells lysate 3600ug.