

IDH1 antibody

Catalog Number: 111601

Product name

IDH1 antibody

Specificity

Human, Mouse, Rat; other species not tested.

Antibody description

IDH1 Rabbit Polyclonal antibody. Positive IHC detected in human gliomas tissue, human kidney tissue, human liver cancer tissue, human lung tissue, human placenta tissue, human skin tissue. Positive IF detected in HepG2 cells. Positive FC detected in HeLa cells. Positive WB detected in mouse liver tissue, DU 145 cells, HEK-293 cells, HeLa cells, HepG2 cells, MCF7 cells, mouse pancreas tissue, mouse small intestine tissue, NIH/3T3 cells, rat liver tissue. Positive IP detected in MCF-7 cells. Observed molecular weight by Western-blot: 47kd

Preparation

This antibody was obtained by immunization of IDH1 recombinant protein (Accession Number: NM_005896). Purification method: Antigen affinity purified.

Formulation

PBS with 0.1% sodium azide and 50% glycerol pH 7.3.

Storage

Store at -20°C. DO NOT ALIQUOT

Clonality

Polyclonal

Ig Type

Rabbit IgG

Applications

ELISA, IP, IF, WB, IHC, FC

Dilutions

Recommended Dilution:

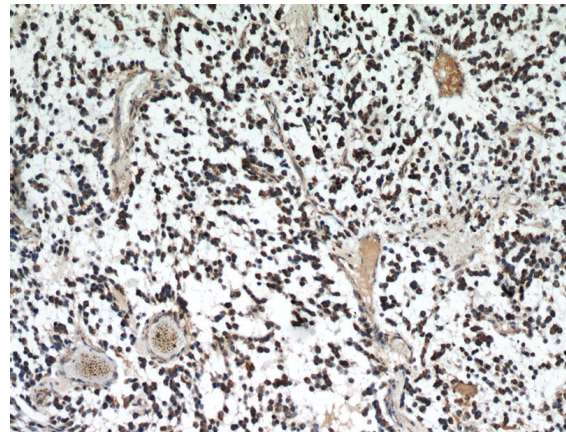
WB: 1:1000-1:10000

IP: 1:200-1:2000

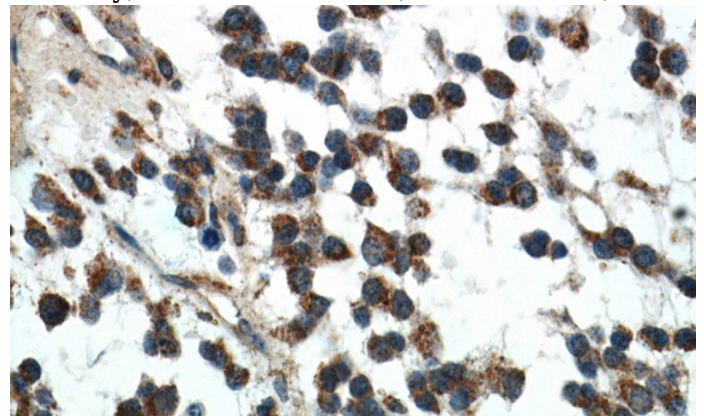
IHC: 1:20-1:200

IF: 1:10-1:100

Validations



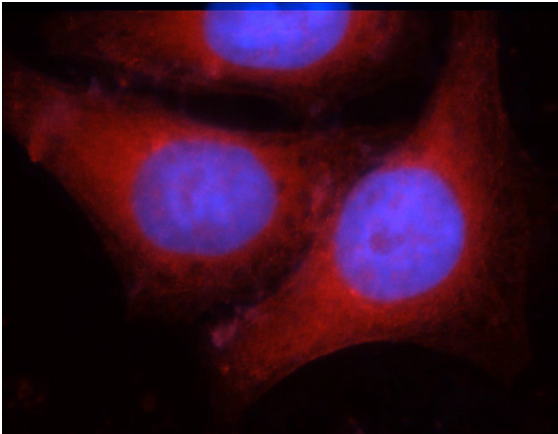
Immunohistochemical of paraffin-embedded human gliomas using Catalog No:111601(IDH1 antibody) at dilution of 1:50 (under 10x lens)



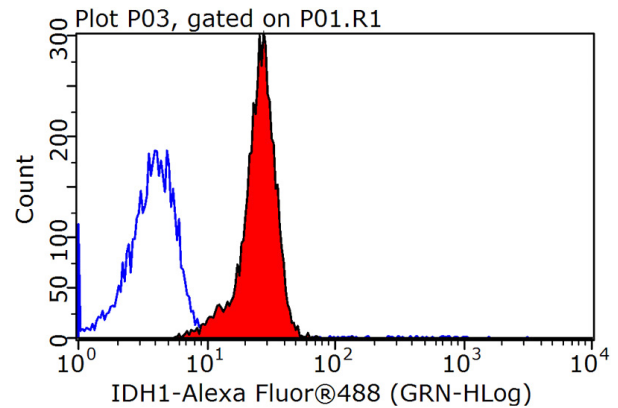
Immunohistochemical of paraffin-embedded human gliomas using Catalog No:111601(IDH1 antibody) at dilution of 1:50 (under 40x lens)

IDH1 antibody

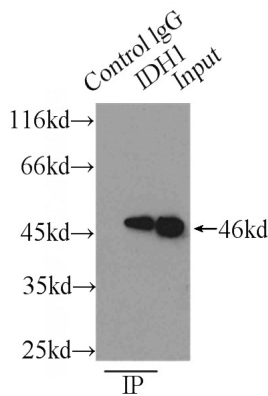
Catalog Number: 111601



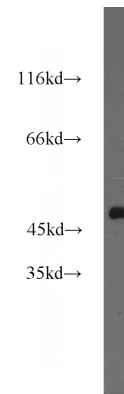
Immunofluorescent analysis of HepG2 cells using Catalog No:111601(IDH1 Antibody) at dilution of 1:25 and Rhodamine-Goat anti-Rabbit IgG



1X10⁶ HeLa cells were stained with 0.2ug IDH1 antibody (Catalog No:111601, red) and control antibody (blue). Fixed with 90% MeOH blocked with 3% BSA (30 min). Alexa Fluor 488-conjugated AffiniPure Goat Anti-Rabbit IgG(H+L)



IP Result of anti-IDH1 (IP:Catalog No:111601, 3ug; Detection:Catalog No:111601 1:600) with MCF-7 cells lysate 2500ug.



with dilution 1:1500.

mouse liver tissue were subjected to SDS PAGE followed by western blot with Catalog No:111601(IDH1 antibody) at dilution of 1:2000