

Anti-PTGFRN antibody



Catalog Number: 141601

Product name

Anti-PTGFRN antibody

Specificity

Human EW1-F / PTGFRN

Antibody description

Rabbit Polyclonal to Human PTGFRN

Preparation

Produced in rabbits immunized with a synthetic peptide corresponding to the center region of the Human EW1-F / PTGFRN. The IgG fraction of the cell culture supernatant was purified by Protein A affinity chromatography.

Formulation

0.2 µm filtered solution in PBS

Storage

This antibody can be stored at 2°C-8°C for one month without detectable loss of activity. Antibody products are stable for twelve months from date of receipt when stored at -20°C to -80°C.

Preservative-Free.

Sodium azide is recommended to avoid contamination (final concentration 0.05%-0.1%). It

is toxic to cells and should be disposed of properly. Avoid repeated freeze-thaw cycles.

Clonality

Polyclonal

Ig Type

Rabbit IgG

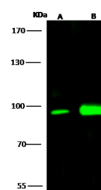
Applications

WB

Dilutions

WB: 0.5-5 µg/ml

Validations



Lanes	A	B
Items		
Sample	NCI-H1299 (whole cell lysate)	Mouse kidney tissue lysate
Sample Volume (µg/lane)	30	30
Gel	7.5% SDS-PAGE reducing gel	
Recommended Concentration	10 µg/ml	
Secondary Antibody	Dylight 800 Labeled Antibody To Rabbit IgG (H+L), at 1:5000 dilution.	
Developed using Odyssey imaging system.		
Explanation	Predicted band size : 99 kDa Observed band size : 99 kDa	

EW1-F / PTGFRN Antibody, Rabbit PAb, Western blot