

EIF4A2 antibody

Catalog Number: 110201

Product name

EIF4A2 antibody

IHC: 1:20-1:200

IF: 1:10-1:100

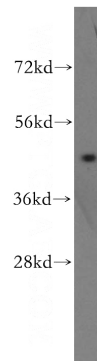
Specificity

Human, Mouse, Rat; other species not tested.

Antibody description

EIF4A2 Rabbit Polyclonal antibody. Positive WB detected in MCF7 cells, HepG2 cells. Positive IHC detected in human ovary tumor tissue, human breast cancer tissue. Positive IF detected in HepG2 cells. Observed molecular weight by Western-blot: 46kd

Validations



Preparation

This antibody was obtained by immunization of EIF4A2 recombinant protein (Accession Number: NM_001967). Purification method: Antigen affinity purified.

MCF7 cells were subjected to SDS PAGE followed by western blot with Catalog No:110201(EIF4A2 antibody) at dilution of 1:500

Formulation

PBS with 0.02% sodium azide and 50% glycerol pH 7.3.

Storage

Store at -20°C. DO NOT ALIQUOT

Clonality

Polyclonal

Ig Type

Rabbit IgG

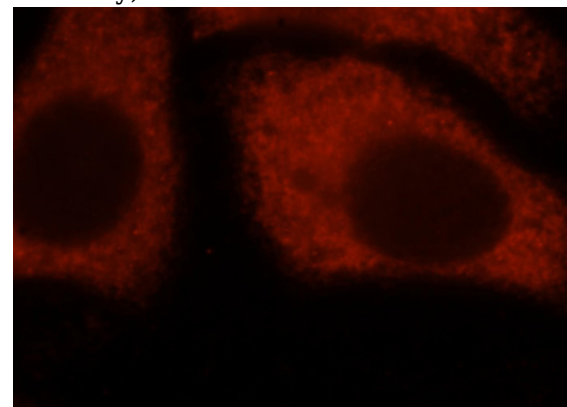
Applications

ELISA, WB, IF, IHC

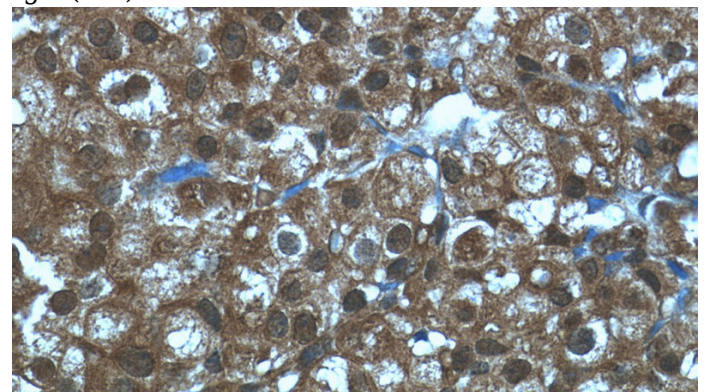
Dilutions

Recommended Dilution:

WB: 1:200-1:2000



Immunofluorescent analysis of HepG2 cells, using EIF4A2 antibody Catalog No:110201 at 1:25 dilution and Rhodamine-labeled goat anti-rabbit IgG (red).

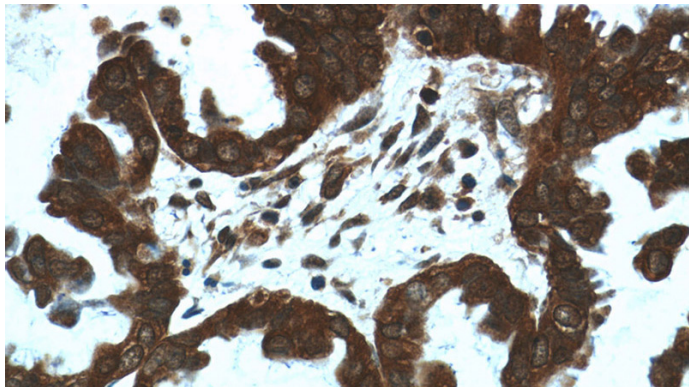


Immunohistochemistry of paraffin-embedded

EIF4A2 antibody

Catalog Number: 110201

human breast cancer tissue slide using Catalog No:110201(EIF4A2 Antibody) at dilution of 1:50 (under 40x lens)



Immunohistochemistry of paraffin-embedded human ovary tumor tissue slide using Catalog No:110201(EIF4A2 Antibody) at dilution of 1:50 (under 40x lens)