

DFF45/DFFA antibody



Catalog Number: 109901

Product name

DFF45/DFFA antibody

IP: 1:500-1:5000

IHC: 1:20-1:200

Specificity

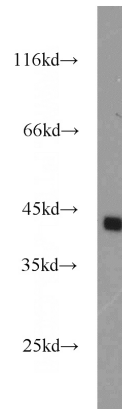
Human; other species not tested.

IF: 1:20-1:200

Antibody description

DFF45/DFFA Rabbit Polyclonal antibody. Positive IP detected in HEK-293 cells. Positive WB detected in HEK-293 cells, HeLa cells. Positive IHC detected in human prostate cancer tissue. Positive IF detected in HEK-293 cells. Observed molecular weight by Western-blot: 45kd

Validations



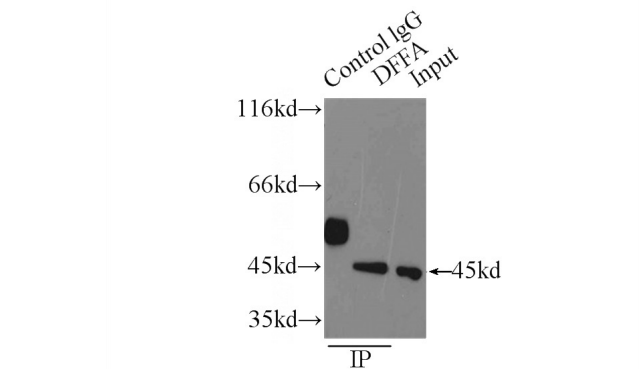
Preparation

This antibody was obtained by immunization of DFF45/DFFA recombinant protein (Accession Number: NM_004401). Purification method: Antigen affinity purified.

HEK-293 cells were subjected to SDS PAGE followed by western blot with Catalog No:109901(DFFA,DFF45 antibody) at dilution of

Formulation

PBS with 0.1% sodium azide and 50% glycerol pH 7.3.



Storage

Store at -20°C. DO NOT ALIQUOT

1:1000

Clonality

Polyclonal

Ig Type

Rabbit IgG

Applications

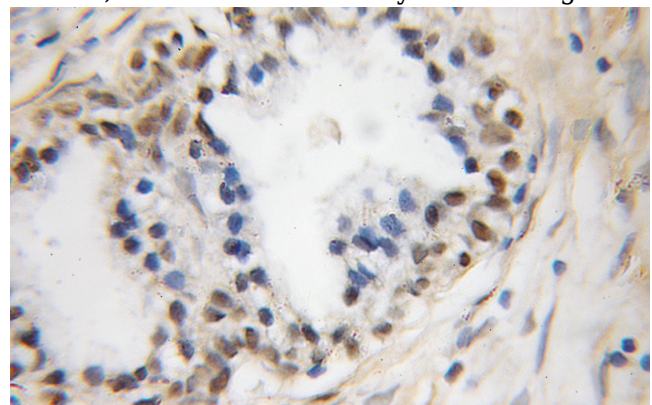
ELISA, WB, IHC, IP, IF

Dilutions

Recommended Dilution:

WB: 1:500-1:5000

IP Result of anti-DFFA,DFF45 (IP:Catalog No:109901, 3ug; Detection:Catalog No:109901 1:1000) with HEK-293 cells lysate 2500ug.

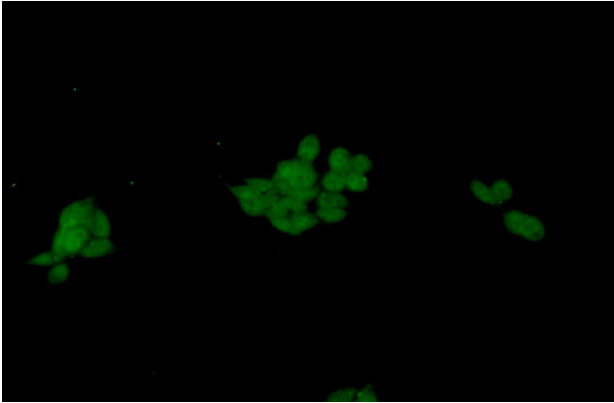


DFF45/DFFA antibody



Catalog Number: 109901

Immunohistochemical of paraffin-embedded human prostate cancer using Catalog No:109901(DFFA,DFF45 antibody) at dilution of 1:100 (under 10x lens)



Immunofluorescent analysis of HEK-293 cells using Catalog No:109901(DFFA,DFF45 Antibody) at dilution of 1:50 and Alexa Fluor 488-conjugated AffiniPure Goat Anti-Rabbit IgG(H+L)