

# YY1AP1 antibody



Catalog Number: 116901

## Product name

YY1AP1 antibody

## Specificity

Human; other species not tested.

## Antibody description

YY1AP1 Rabbit Polyclonal antibody. Positive WB detected in MDA-MB-231 cells. Positive IF detected in HepG2 cells. Observed molecular weight by Western-blot: 75 kDa and 50 kDa

## Preparation

This antibody was obtained by immunization of YY1AP1 recombinant protein (Accession Number: BC003500). Purification method: Antigen affinity purified.

## Formulation

PBS with 0.1% sodium azide and 50% glycerol pH 7.3.

## Storage

Store at -20°C. DO NOT ALIQUOT

## Clonality

Polyclonal

## Ig Type

Rabbit IgG

## Applications

ELISA, IF, WB

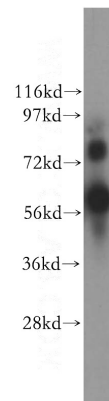
## Dilutions

Recommended Dilution:

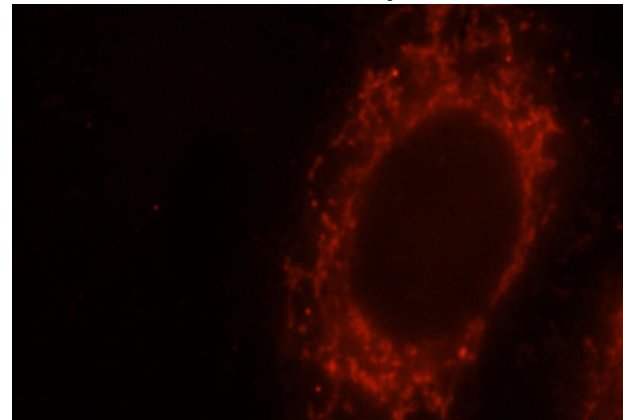
WB: 1:200-1:2000

IF: 1:10-1:100

## Validations



MDA-MB-231 cells were subjected to SDS PAGE followed by western blot with Catalog No:116901(YY1AP1 antibody) at dilution of 1:800



Immunofluorescent analysis of HepG2 cells, using YY1AP1 antibody Catalog No:116901 at 1:25 dilution and Rhodamine-labeled goat anti-rabbit IgG (red).