

# Miptenalimab reference antibody



Catalog Number: 176901

## Product name

Miptenalimab reference antibody

## Specificity

Human LAG3 / CD223

## Antibody description

Anti-LAG3 / CD223 Antibody (Miptenalimab)

## Preparation

Recombinant expression and purified from CHO cells.

## Formulation

0.1 M Pro-Ac, 20 mM Arg, pH 5.0

## Storage

-80°C for 2 years under sterile conditions; -20°C for 1 year under sterile conditions; Avoid repeated freeze-thaw cycles.

## Clonality

Monoclonal

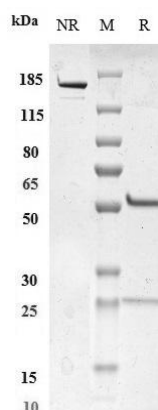
## Ig Type

IgG4SP

## Applications

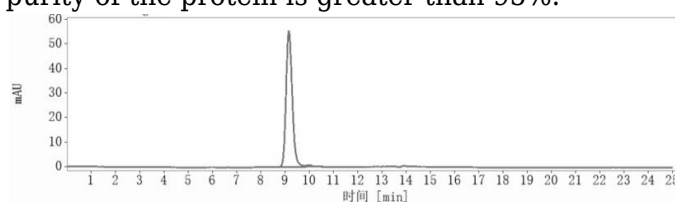
ELISA

## Validations



## SDS-PAGE

Anti-LAG3 / CD223 Antibody (miptenalimab) on SDS-PAGE under reducing (R) condition. The purity of the protein is greater than 95%.



## SEC-HPLC

The purity of Anti-LAG3 / CD223 Antibody (miptenalimab) is more than 95%, determined by SEC-HPLC.