

# Anti-Stathmin 1 Rabbit antibody



Catalog Number: 166901

## Product name

Anti-Stathmin 1 Rabbit antibody

## Specificity

Human, Mouse, Rat

## Antibody description

Stathmin 1 Rabbit polyclonal antibody

## Preparation

Antigen: A synthetic peptide of human Stathmin 1

## Formulation

Supplied in 50nM Tris-Glycine(pH 7.4), 0.15M NaCl, 40%Glycerol, 0.01% sodium azide and 0.05% BSA.

## Storage

Store at -20°C. Stable for 12 months from date of receipt.

## Clonality

Polyclonal

## Ig Type

Rabbit IgG

## Applications

WB, IHC-P, ICC/IF, FC, IP

## Dilutions

WB: 1/5000

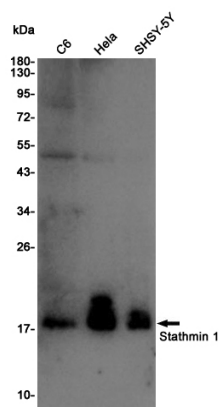
IHC: 1/20

ICC/IF: 1/20-1/50

FC: 1/20

IP: 1/20

## Validations



Western blot detection of Stathmin 1 in C6,HeLa,SHSY-5Y cell lysates using Stathmin 1 Rabbit pAb(1:1000 diluted).Predicted band size:17KDa.Observed band size:17KDa.