

Anti-CDKL4 antibody



Catalog Number: 175901

Product name

Anti-CDKL4 antibody

Ig Type

Rabbit IgG

Specificity

Human

Applications

WB, IHC-P, IF

Antibody description

Rabbit polyclonal antibody to CDKL4

Dilutions

WB: 1:500-1:2000

Preparation

This antigen of this antibody was the antiserum was produced against synthesized peptide derived from human cdkl4. aa range:266-315

IHC-P: 1:100-1:300

IF: 1:100-1:500

Formulation

Liquid, Liquid in PBS containing 50% glycerol, 0.5% BSA and 0.02% sodium azide.

Validations

Storage

Store at +4°C after thawing. Aliquot store at -20°C or -80°C. Avoid repeated freeze / thaw cycles.

Clonality

Polyclonal

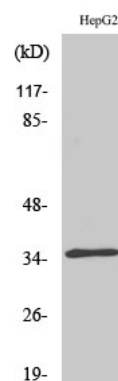


Fig1.; Western Blot analysis of various cells using CdkL4 Polyclonal Antibody diluted at 1: 500