

# BIN1 antibody

Catalog Number: 108501

## Product name

BIN1 antibody

IP: 1:200-1:2000

IHC: 1:20-1:200

## Specificity

Human, Mouse, Rat; other species not tested.

## Antibody description

BIN1 Rabbit Polyclonal antibody. Positive IP detected in mouse brain tissue. Positive WB detected in Jurkat cells, mouse brain tissue. Positive IHC detected in human osteosarcoma tissue. Observed molecular weight by Western-blot: 60-65 kDa

## Preparation

This antibody was obtained by immunization of BIN1 recombinant protein (Accession Number: NM\_139350). Purification method: Antigen affinity purified.

## Formulation

PBS with 0.02% sodium azide and 50% glycerol pH 7.3.

## Storage

Store at -20°C. DO NOT ALIQUOT

## Clonality

Polyclonal

## Ig Type

Rabbit IgG

## Applications

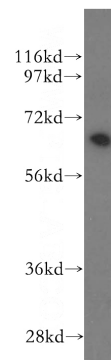
ELISA, WB, IHC, IP

## Dilutions

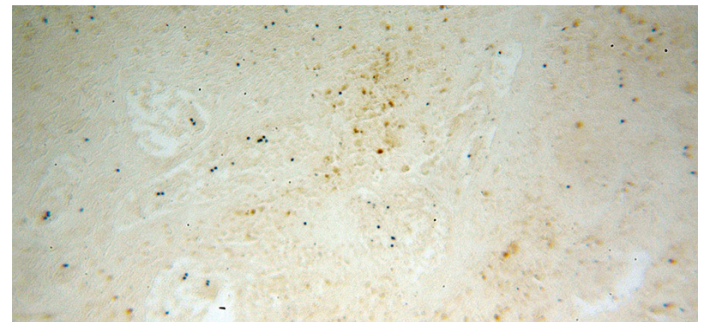
Recommended Dilution:

WB: 1:500-1:5000

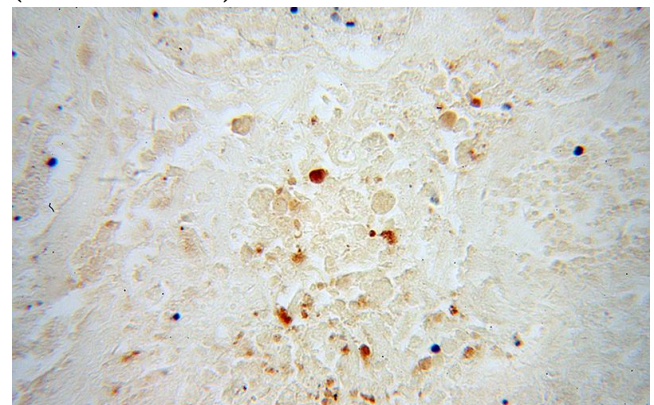
## Validations



Jurkat cells were subjected to SDS PAGE followed by western blot with Catalog No:117146(BIN1 antibody) at dilution of 1:500



Immunohistochemical of paraffin-embedded human osteosarcoma using Catalog No:117146(BIN1 antibody) at dilution of 1:100 (under 10x lens)



Immunohistochemical of paraffin-embedded

# BIN1 antibody

Catalog Number: 108501

---

human osteosarcoma using Catalog No:117146(BIN1 antibody) at dilution of 1:100 (under 40x lens)

IP Result of anti-BIN1 (IP:Catalog No:117146, 4ug; Detection:Catalog No:117146 1:500) with mouse brain tissue lysate 3440ug.

