

Anti-Cyclin B1 Mouse antibody



Catalog Number: 168501

Product name

Anti-Cyclin B1 Mouse antibody

Specificity

Human, Rat

Antibody description

Cyclin B1 Mouse monoclonal antibody

Preparation

Antigen: Purified recombinant fragment of human CCNB1 expressed in E. Coli.

Formulation

Ascitic fluid containing 0.03% sodium azide.

Storage

Store at 4°C short term. Store at -20°C long term. Avoid freeze / thaw cycle.

Clonality

Monoclonal

Ig Type

Mouse IgG1

Applications

WB, ICC/IF, FC

Dilutions

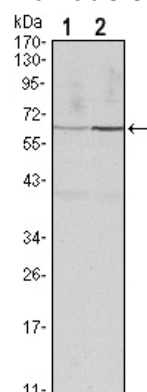
WB: 1/500 - 1/2000

ICC: 1/200 - 1/1000

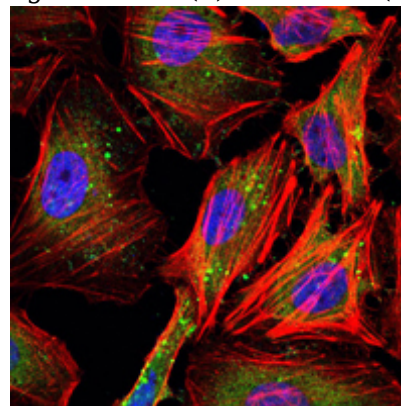
FC: 1/200 - 1/400

ELISA: 1/10000

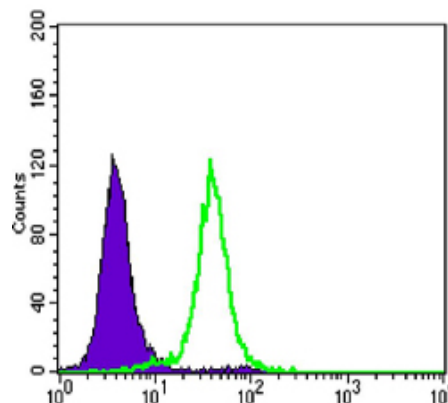
Validations



Western blot analysis using CCNB1 mouse mAb against HeLa (1) and PC-12 (2) cell lysate.



Immunofluorescence analysis of HeLa cells using CCNB1 mouse mAb (green). Blue: DRAQ5 fluorescent DNA dye. Red: Actin filaments have been labeled with Alexa Fluor-555 phalloidin.



Flow cytometric analysis of HeLa cells using CCNB1 mouse mAb (green) and negative control (purple).