

# RABL2B antibody



Catalog Number: 114501

## Product name

RABL2B antibody

## Specificity

Human, Mouse, Rat; other species not tested.

## Antibody description

RABL2B Rabbit Polyclonal antibody. Positive IHC detected in human lung cancer tissue. Positive WB detected in human brain tissue, human heart tissue, human kidney tissue, human liver tissue. Observed molecular weight by Western-blot: 26 kDa

## Preparation

This antibody was obtained by immunization of RABL2B recombinant protein (Accession Number: NM\_001130919). Purification method: Antigen affinity purified.

## Formulation

PBS with 0.1% sodium azide and 50% glycerol pH 7.3.

## Storage

Store at -20°C. DO NOT ALIQUOT

## Clonality

Polyclonal

## Ig Type

Rabbit IgG

## Applications

ELISA, WB, IHC

## Dilutions

Recommended Dilution:

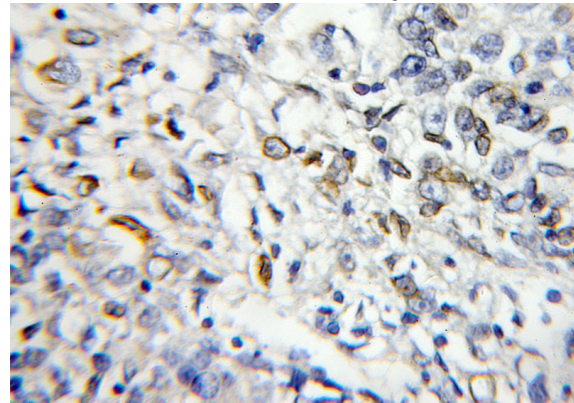
WB: 1:1000-1:10000

IHC: 1:20-1:200

## Validations



human brain tissue were subjected to SDS PAGE followed by western blot with Catalog No:114501(RABL2B antibody) at dilution of 1:500



Immunohistochemical of paraffin-embedded human lung cancer using Catalog No:114501(RABL2B antibody) at dilution of 1:50 (under 10x lens)