

# KLHL29 antibody



Catalog Number: 112101

## Product name

KLHL29 antibody

## Specificity

human, mouse, rat; other species not tested.

## Antibody description

KLHL29 Rabbit Polyclonal antibody. Positive IHC detected in human kidney.

## Preparation

This antibody was obtained by immunization of KLHL29 recombinant protein (Accession Number: BC015667). Purification method: Antigen affinity purified.

## Formulation

PBS with 0.02% sodium azide and 50% glycerol pH 7.3.

## Storage

Store at -20°C. DO NOT ALIQUOT

## Clonality

Polyclonal

## Ig Type

Rabbit IgG

## Applications

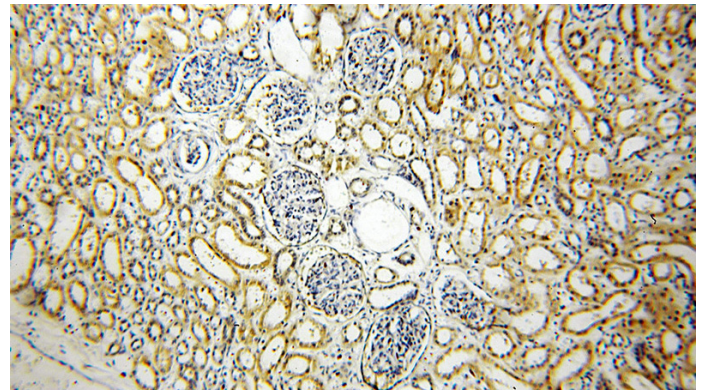
ELISA, IHC

## Dilutions

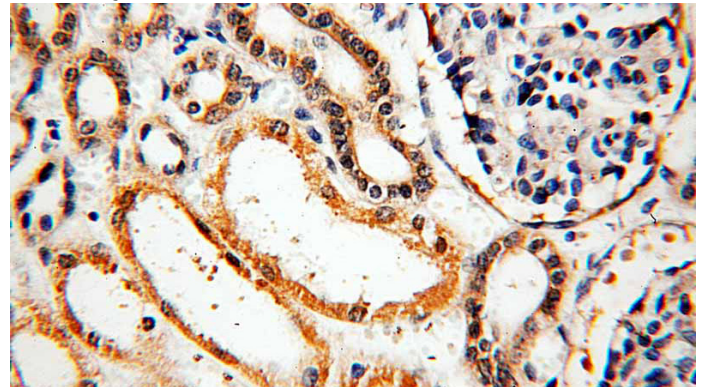
Recommended Dilution:

IHC: 1:20-1:200

## Validations



Immunohistochemical of paraffin-embedded human kidney using Catalog No:112101(KLHL29 antibody) at dilution of 1:100 (under 10x lens)



Immunohistochemical of paraffin-embedded human kidney using Catalog No:112101(KLHL29 antibody) at dilution of 1:100 (under 40x lens)