

Mouse IL-4/IL4 / Interleukin-4 (Q136D, Y139D, His Tag) recombinant protein



Catalog Number: 502101

General Information

Gene Name Synonym

B-cell IgG differentiation factor; B-cell growth factor 1; B-cell stimulatory factor 1; IGG1 induction factor; Lymphocyte stimulatory factor 1

Protein Construction

A DNA sequence encoding the mouse IL4 (P07750) (Met 1-Ser140, Q136D, Y139D) was expressed with a polyhistidine tag at the C-terminus.

Organism

Mouse

Expression Host

Baculovirus-Insect Cells

QC Testing

Activity

1. Measured by its binding ability in a functional ELISA. Immobilized mouse IL4-His (Cat:502101) at 10 µg/mL (100 µl/well) can bind rat IL4R-Fc (Cat:502616), The EC₅₀ of rat IL4R-Fc (Cat:502616) is 0.12-0.29 µg/mL.
2. Measured by its ability to inhibit mIL4 dependent proliferation of HT-2 cells. The ED₅₀ for this effect is typically 2-10 ng/ml in the presence of 2 ng/ml Recombinant Mouse IL4.

Purity

> 95 % as determined by SDS-PAGE

Endotoxin

< 1.0 EU per µg of the protein as determined by the LAL method

Stability

Samples are stable for up to twelve months from

date of receipt at -70°C

Predicted N terminal

His 21

Molecular Mass

The recombinant mouse IL4 consists of 131 amino acids and predicts a molecular mass of 14.9 KDa. It migrates as an approximately 19 KDa band in SDS-PAGE under reducing conditions due to glycosylation.

Formulation

Lyophilized from sterile 20mM Tris, 500mM NaCl, 10% glycerol, pH 8.5.

1. 5 % trehalose and mannitol are added as protectants before lyophilization.
2. Please contact us for any concerns or special requirements.

Usage Guide

Storage

Store it under sterile conditions at -20°C to -80°C. It is recommended that the protein be aliquoted for optimal storage. Avoid repeated freeze-thaw cycles.

Reconstitution

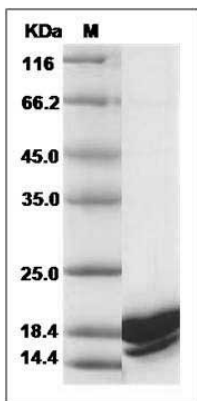
Adding sterile water, prepare a stock solution of 0.25 mg/ml. Concentration is measured by UV-Vis.

SDS-PAGE

Mouse IL-4/IL4 / Interleukin-4 (Q136D, Y139D, His Tag) recombinant protein



Catalog Number: 502101



Mouse IL4 / Interleukin-4 Protein (Q136D, Y139D, His Tag) SDS-PAGE