

# Anti-beta 2 Microglobulin Rabbit antibody



Catalog Number: 166801

## Product name

Anti-beta 2 Microglobulin Rabbit antibody

WB: 1/1000

IHC: 1/200

## Specificity

Human, Mouse, Rat

FC: 1/20

IP: 1/20

## Antibody description

beta 2 Microglobulin Rabbit polyclonal antibody

## Validations

## Preparation

Antigen: Recombinant protein of human beta 2 Microglobulin

## Formulation

Supplied in 50nM Tris-Glycine(pH 7.4), 0.15M NaCl, 40%Glycerol, 0.01% sodium azide and 0.05% BSA.

## Storage

Store at -20°C. Stable for 12 months from date of receipt.

## Clonality

Polyclonal

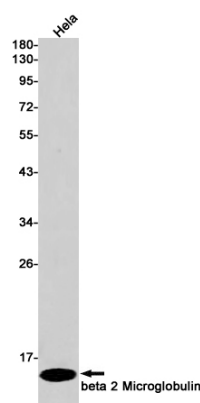
## Ig Type

Rabbit IgG

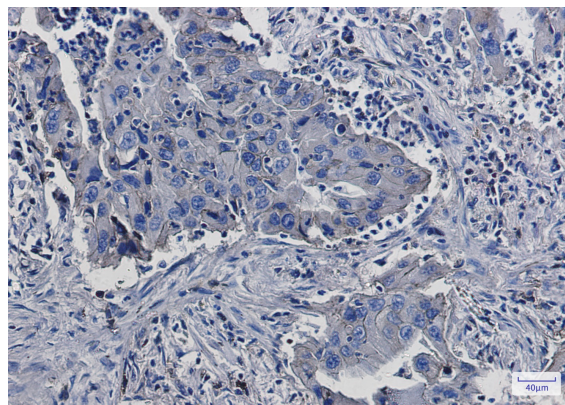
## Applications

WB, IHC-P, FC, IP

## Dilutions



Western blot detection of beta 2 Microglobulin in HeLa cell lysates using beta 2 Microglobulin Rabbit pAb(1:1000 diluted). Predicted band size:14kDa. Observed band size:14kDa.



Immunohistochemistry of beta 2 Microglobulin in paraffin-embedded Human lung cancer tissue using beta 2 Microglobulin Rabbit pAb at dilution 1/50