

Anti-CEBPB antibody



Catalog Number: 105801

Product name

Anti-CEBPB antibody

Specificity

Human CEBPB

Antibody description

Rabbit polyclonal to CEBPB

Preparation

Produced in rabbits immunized with A synthetic peptide corresponding to the C-terminus of the human CEBPB, and purified by antigen affinity chromatography.

Formulation

0.2 µm filtered solution in PBS

Storage

This antibody can be stored at 2°C-8°C for one month without detectable loss of activity. Antibody products are stable for twelve months from date of receipt when stored at -20°C to -80°C.

Preservative-Free.

Sodium azide is recommended to avoid contamination (final concentration 0.05%-0.1%). It is toxic to cells and should be disposed of

properly. Avoid repeated freeze-thaw cycles.

Clonality

Polyclonal

Ig Type

Rabbit IgG

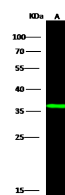
Applications

WB

Dilutions

WB: 5-10 µg/mL

Validations



Lanes	A
Items	
Sample (whole cell lysate)	PC12
Sample Volume (µg/Lane)	30
Gel	13% SDS-PAGE, reducing gel
Recommended Concentration	5-10µg/ml
Secondary Antibody	Dylight 800 labeled Antibody to Rabbit IgG (1:1), at 1:5000 dilution.
Developed using Odyssey imaging system.	
Explanation	Predicted band size : 36 kDa Observed band size : 36 kDa

CEBPB Antibody, Rabbit PAb, Antigen Affinity Purified, Western blot