

Anti-GMFB antibody



Catalog Number: 104801

Product name

Anti-GMFB antibody

Immunogen

[Human GMFB recombinant protein](#)

Specificity

Human GMFB

Antibody description

Rabbit polyclonal to GMFB

Preparation

Produced in rabbits immunized with purified, recombinant Human GMFB (rh GMFB; GMFB_HUMAN; Met1-His142). GMFB specific IgG was purified by Human GMFB affinity chromatography.

Formulation

0.2 µm filtered solution in PBS

Storage

This antibody can be stored at 2°C-8°C for one month without detectable loss of activity. Antibody products are stable for twelve months from date of receipt when stored at -20°C to -80°C.

Preservative-Free.

Sodium azide is recommended to avoid contamination (final concentration 0.05%-0.1%). It is toxic to cells and should be disposed of

properly. Avoid repeated freeze-thaw cycles.

Clonality

Polyclonal

Ig Type

Rabbit IgG

Applications

ELISA, WB

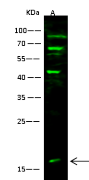
Dilutions

WB: 10-20 µg/ml

ELISA: 0.1-0.2 µg/ml

This antibody can be used at 0.1-0.2 µg/ml with the appropriate secondary reagents to detect Human GMFB.

Validations



Items	Lanes
Sample (whole cell lysate)	Jurkat
Sample Volume (µg/lane)	30
Gel	13% SDS-PAGE reducing gel
Recommended concentration	10-20 µg/ml
Secondary Antibody	Dylight 800-labeled Antibody to Rabbit IgG (H+L), at 1:5000 dilution
Developed using Odyssey imaging system.	
Explanation	Protein band size: 17 kDa Observed band size: 17 kDa Additional bands at: 85 kDa, 63 kDa and 60 kDa (We are unsure as to the identity of these extra bands.)

GMFB Antibody, Rabbit PAb, Antigen Affinity Purified, Western blot