

CLPP antibody



Catalog Number: 109401

Product name

CLPP antibody

Specificity

Human, Mouse, Rat; other species not tested.

Antibody description

CLPP Rabbit Polyclonal antibody. Positive IP detected in mouse skeletal muscle tissue. Positive WB detected in K-562 cells, human placenta tissue, rat heart tissue. Positive IHC detected in human heart tissue, human brain tissue, human kidney tissue, human liver cancer tissue, human liver tissue, human lung tissue, human ovary tissue, human pancreas tissue, human placenta tissue, human skin tissue, human spleen tissue, human testis tissue. Positive IF detected in HeLa cells. Observed molecular weight by Western-blot: 26 kDa; 30 kDa

Preparation

This antibody was obtained by immunization of CLPP recombinant protein (Accession Number: NM_006012). Purification method: Antigen affinity purified.

Formulation

PBS with 0.02% sodium azide and 50% glycerol pH 7.3.

Storage

Store at -20°C. DO NOT ALIQUOT

Clonality

Polyclonal

Ig Type

Rabbit IgG

Applications

ELISA, WB, IHC, IF, IP

Dilutions

Recommended Dilution:

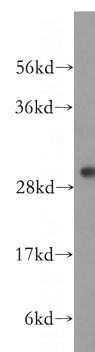
WB: 1:500-1:5000

IP: 1:200-1:2000

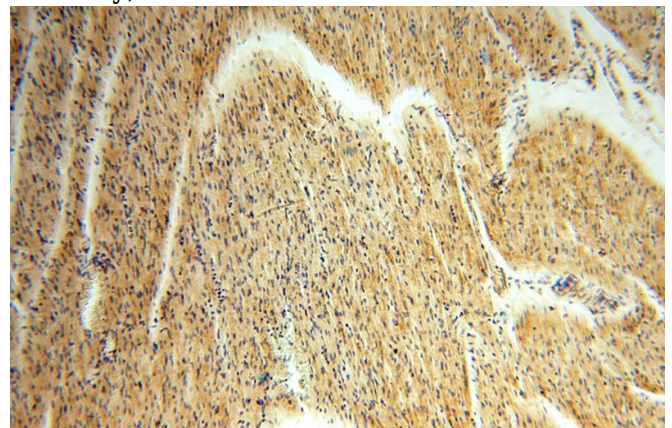
IHC: 1:20-1:200

IF: 1:10-1:100

Validations



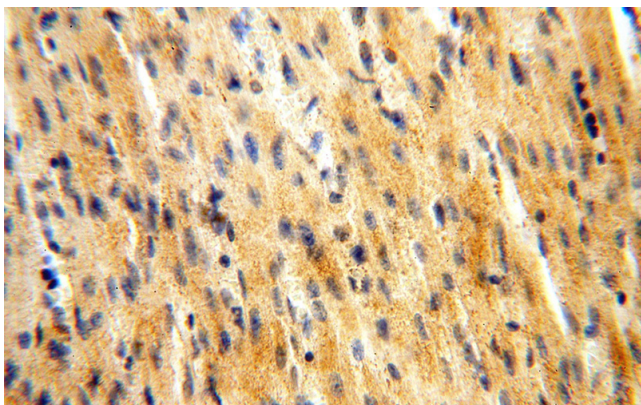
K-562 cells were subjected to SDS PAGE followed by western blot with Catalog No:109401 (CLPP antibody) at dilution of 1:500



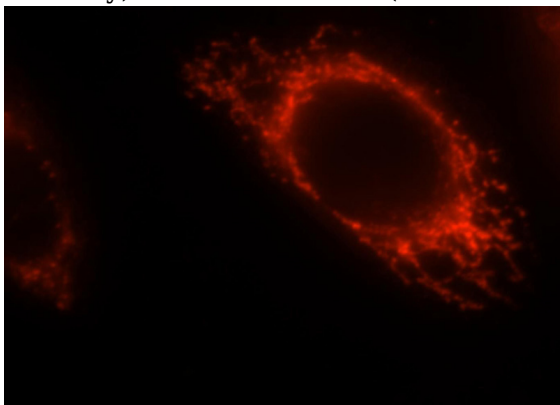
Immunohistochemical of paraffin-embedded human heart using Catalog No:109401 (CLPP antibody) at dilution of 1:50 (under 10x lens)

CLPP antibody

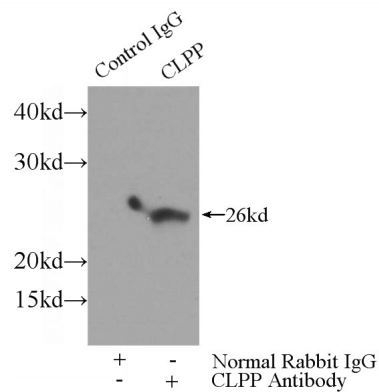
Catalog Number: 109401



Immunohistochemical of paraffin-embedded human heart using Catalog No:109401(CLPP antibody) at dilution of 1:50 (under 40x lens)



Immunofluorescent analysis of HeLa cells, using CLPP antibody Catalog No:109401 at 1:25 dilution and Rhodamine-labeled goat anti-rabbit IgG (red).



IP Result of anti-CLPP (IP:Catalog No:109401, 3ug; Detection:Catalog No:109401 1:500) with mouse skeletal muscle tissue lysate 4000ug.