

# Anti-PTGER4 antibody

Catalog Number: 175401

## Product name

Anti-PTGER4 antibody

## Specificity

Human, Bee

## Antibody description

Rabbit polyclonal antibody to PTGER4

## Preparation

This antigen of this antibody was klh conjugated synthetic peptide derived from human ep4r/prostaglandin e receptor ep4 151-250/488

## Formulation

Liquid, 0.01M TBS(pH7.4) with 1% BSA, 0.03% Proclin300 and 50% Glycerol.

## Storage

Store at -20°C for one year. Avoid repeated freeze/thaw cycles. The lyophilized antibody is stable at room temperature for at least one month and for greater than a year when kept at -20°C. When reconstituted in sterile pH 7.4 0.01M PBS or diluent of antibody the antibody is stable for at least two weeks at 2-4°C.

## Clonality

Polyclonal

## Ig Type

Rabbit IgG

## Applications

WB, FC

## Dilutions

WB:1:500-2000

FC:1µg/Test

## Validations

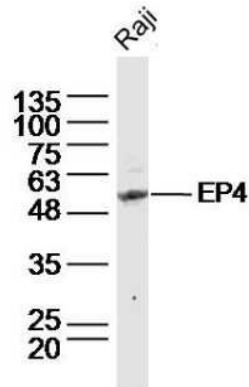
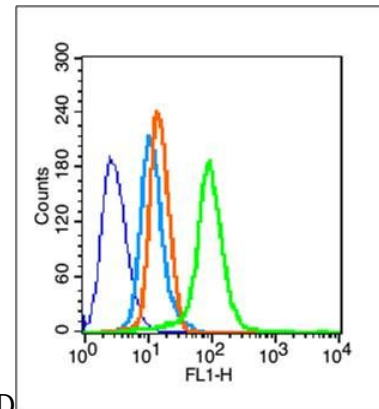
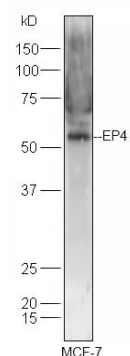


Fig1: Sample:; Raji(Human) Cell Lysate at 30 ug; Primary: Anti-EP4 at 1/300 dilution; Secondary: IRDye800CW Goat Anti-Rabbit IgG at 1/20000 dilution; Predicted band size: 53 kD; Observed



band size: 53 kD

Fig2: Blank control (blue line): Hela (fixed with 70% methanol (Overnight at -20°C) and then permeabilized with ice-cold 90% methanol for 30 min on ice); Primary Antibody (green line): Rabbit Anti-EP4 antibody ,Dilution: 1µg /10<sup>6</sup> cells;; Isotype Control Antibody (orange line): Rabbit IgG ; Secondary Antibody (white blue line): Goat anti-



rabbit IgG-FITC,Dilution: 1µg /test.

# Anti-PTGER4 antibody



Catalog Number: 175401

---

Fig3: Sample:; MCF-7 Cell (Human) Lysate at 30 ug; Primary: Anti-EP4 at 1/300 dilution; Secondary: IRDye800CW Goat Anti-Rabbit IgG at

1/20000 dilution; Predicted band size: 53 kD; Observed band size: 53 kD