

ERBB2IP antibody

Catalog Number: 110401

Product name

ERBB2IP antibody

Specificity

Human; other species not tested.

Antibody description

ERBB2IP Rabbit Polyclonal antibody. Positive IHC detected in human heart tissue, human kidney tissue. Positive WB detected in MCF7 cells, HeLa cells. Observed molecular weight by Western-blot: 150-180 kDa

Preparation

This antibody was obtained by immunization of ERBB2IP recombinant protein (Accession Number: XM_047417382). Purification method: Antigen Affinity purified.

Formulation

PBS with 0.02% sodium azide and 50% glycerol pH 7.3.

Storage

Store at -20°C. DO NOT ALIQUOT

Clonality

Polyclonal

Ig Type

Rabbit IgG

Applications

ELISA, WB, IHC

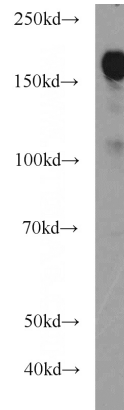
Dilutions

Recommended Dilution:

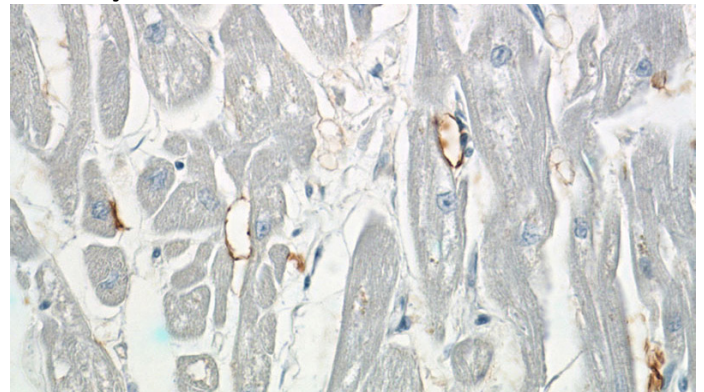
WB: 1:200-1:2000

IHC: 1:20-1:200

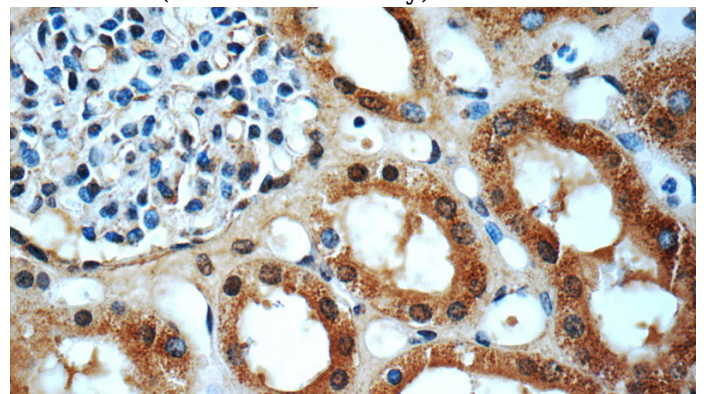
Validations



MCF7 cells were subjected to SDS PAGE followed by western blot with Catalog No:110401(ERBB2IP antibody) at dilution of 1:1000



Immunohistochemistry of paraffin-embedded human heart slide using Catalog No:110401(ERBB2IP Antibody) at dilution of 1:50



Immunohistochemistry of paraffin-embedded human kidney slide using Catalog No:110401(ERBB2IP Antibody) at dilution of 1:50